

N E X T

by Danwood



NEXT by Danwood - the ideal choice for quick construction

Comfortable, energy-saving houses with modular construction

We live in a fast-moving world, so we believe that you should be able to realise your home-building dreams quickly too. Now that's possible, thanks to the advanced technology used to construct the 'NEXT by Danwood' range of modular houses.

Delivered and assembled quickly

The rapid construction methods make the NEXT range ideal for customers who want a comfortable, fully-equipped house today, rather than tomorrow. A high level of prefabrication in the Danwood factory not only guarantees shorter delivery times and the highest quality, but also a construction time on site which could be as short as a matter of just weeks!



Houses full of ideas

Floor-to-ceiling windows like glass walls

Decades of experience in house building have been incorporated into the modern NEXT designs to meet today's expectations of style and contemporary living. The straight-lined, minimalist form and the large glass surfaces of the NEXT range reflect current trends in house construction. The high-quality silicone plaster on the exterior is also available in a range of dark colours, to give the building its own unique character. Extra-high front doors or contrasting facade panels are also available as optional extras.

A wide selection of bungalows and villas

'NEXT by Danwood' currently includes a small, but very versatile, range of bungalows with 80, 90, 110, 117 or 140 square metres of living space. Primarily aimed at couples and singles, these homes would also suit small families. For those looking for bigger homes, NEXT also offers modern villas in sizes from 145 to 176 square metres. The choice between a flat or hipped roof is possible for most house types, and there are also beautiful gabled roof houses in sizes ranging from 142 to 203 square metres.

Go green on the roof

If you opt for a flat roof you can go green, while also mitigating the environmental impact of climate change. A green roof not only looks attractive, but provides a perfect microclimate outdoors to enhance biodiversity in towns and cities.





Move in the day you get the keys

Your NEXT house is completely move-in ready.

So when the keys are in your hand you can move your furniture in straight away, as your choice of interior materials, such as tiles, sanitaryware, vinyl and wall colours were made before your house went into production. You can also choose a fully finished project from our NEXT interior designers to suit your exact tastes and distinctive sense of style. Either way, you can be sure of the highest standards of design, using long-lasting and high quality materials.

Quality brands for first rate furnishings

We only use the best brands at every stage of the process so that, even in the bathroom, the quality of sanitaryware and fittings is above standard.

A kitchen on request

We like to make your build journey as easy and convenient as possible, which is why we also offer the NEXT range of houses with a fully equipped kitchen.

Bungalows



1.5-storey houses



2-storey houses





Good for the climate - and your bank account

Every NEXT house is an energy efficient house

With a NEXT house, you'll be building a home that meets the highest energy saving requirements while also protecting the environment. Not only can you produce and store your own electricity, but you can provide heat and hot water using renewable energy.

Modern heating technology included

NEXT houses generate their own electricity to operate the air-to-water heat pump system using photovoltaic panels. A heat pump recovers heat and energy from the ambient air for heating water. Fresh air enters the house via an automatic ventilation system with heat recovery, so that your house is both excellently insulated and well ventilated.



FIBARO

Beautifully smart

A Smart home system for complete comfort and security

Our Smart Home package from Fibaro, 'Comfort & Security Complete', offers you a comprehensive level of Smart technology in your home, including lighting, sockets, heating, shutters and other sensors.

It's always nice to have beautiful lighting scenarios, but when it comes to controlling windows and doors, it pays to be on the safe side. Which is why we also offer roller shutters which can be raised or lowered according to your needs to further increase security.

Easy-to-use intelligent technology

This Smart Home technology is so easy and convenient that, in a very short time, you'll wonder how you've been able to live without it. Even if you're not very tech savvy, you don't need to worry, because this Smart technology is very easy to use.



Maximum prefabrication

Precision-built in the factory

Like all Danwood modular houses, our NEXT range is also prefabricated in the factory and the components then shipped to the customer's plot. The standard and level of prefabrication is very high. Windows, shutters and front doors are pre-installed in the factory, along with complete bathrooms, including tiles and sanitary ware. The walls of all rooms are painted, electric points and underfloor heating are installed, and the floors covered with high-quality vinyl. If you've ordered a kitchen, this will also have been installed in the factory.

Complete construction in as little as three weeks

So much fabrication of the house takes place at the factory that assembly on site can take a little as three weeks. Ceilings are already sealed, EPDM foils applied in flat roofs, trusses on hipped roofs, and roof tiles are also applied in the factory, considerably reducing work on site. The modules are attached to the base plate, connected to each other and the seams are secured and decorated. It usually takes two, or a maximum of three weeks from delivery to handover, to complete the construction.



Time saving delivery

No delays or setbacks

Regardless of bad weather, the design and interior fittings have already been carried out inside the factory, saving time for us and for you. We don't need to rely on hard-to-find subcontractors, such as screed layers or heating and plumbing specialists when on the construction site, as the assembly of these modules has already been completed and finished. In fact, your home is almost 100% completed in the factory by our teams of highly skilled craftsmen, without delays caused by snow, ice, wind and other disruptions, which means they can focus entirely on the quality of work. Finally, a Danwood construction crew completes the interior decoration once your house is fully constructed on site.

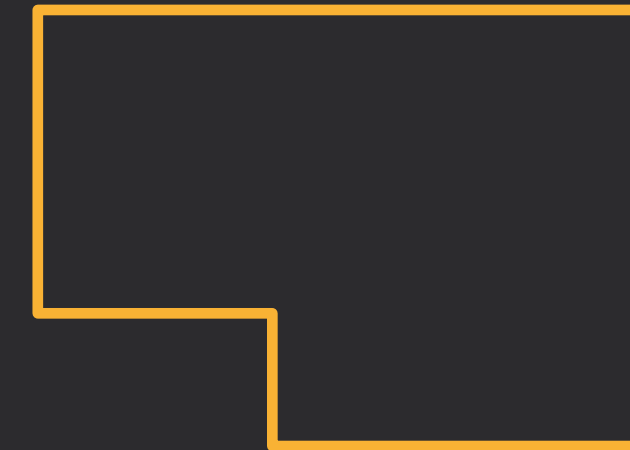
Perfect for any plot

The modules are perfectly designed and sized so that they can be easily delivered to almost any plot. As with any new house, you need to submit a building application to the local authority. You also need to organise laying the foundations for your chosen NEXT house.

NEXT Bungalows

Modules on one level

Module after module... at first, it doesn't sound very exciting. But what can emerge from a modular build is anything but monotonous, as you will see from the stylish bungalows on the next pages. The clever design and bright living ambience add to the quality of living. Smart home technology increases comfort and security, while environmentally friendly heat and electricity are primarily generated in-house. Dream homes for the future – modularly built.





NEXT 80

With its flat roof, the NEXT 80F looks stylish and contemporary. The floor-to-ceiling windows allow daylight to flood the rooms, and sun worshippers will find their paradise on the terrace. The flat roof can also be covered with greenery so that you can create your own microclimate. You can see the same house design with a hipped roof on the next pages. Both variants are offered with or without a patio roof.

#HouseToGo #Turn-key #EnergyEfficiency #SmartHome

As standard, the house includes painting, tiles, vinyl flooring and roller shutters with an electric drive. It also includes a NEXT technology package with an air-water heat pump with underfloor heating, a ventilation system with heat recovery, smart technology and a photovoltaic system with battery storage from top of floor slab/basement ceiling.





NEXT 80

NEXT 80	77,63 m²
Entrance	5,60 m ²
Hall	8,80 m ²
Living/Dining	22,72 m ²
Kitchen	10,11 m ²
Bedroom	14,31 m ²
Wardrobe	5,25 m ²
Bathroom	5,71 m ²
Technical Room	5,13 m ²









NEXT 90

An eye-catcher from the outside and a light-catcher from the inside. The impressive NEXT 90 features a terrace-side glass front, with clear lines and corner glazing. These elements of modern architecture harmonise perfectly with the flat roof and are inspired by the popular Bauhaus style. The NEXT 90 is also stunning with a hipped roof, and both variants are offered with or without a patio roof.

#HouseToGo #Turn-key #EnergyEfficiency #SmartHome

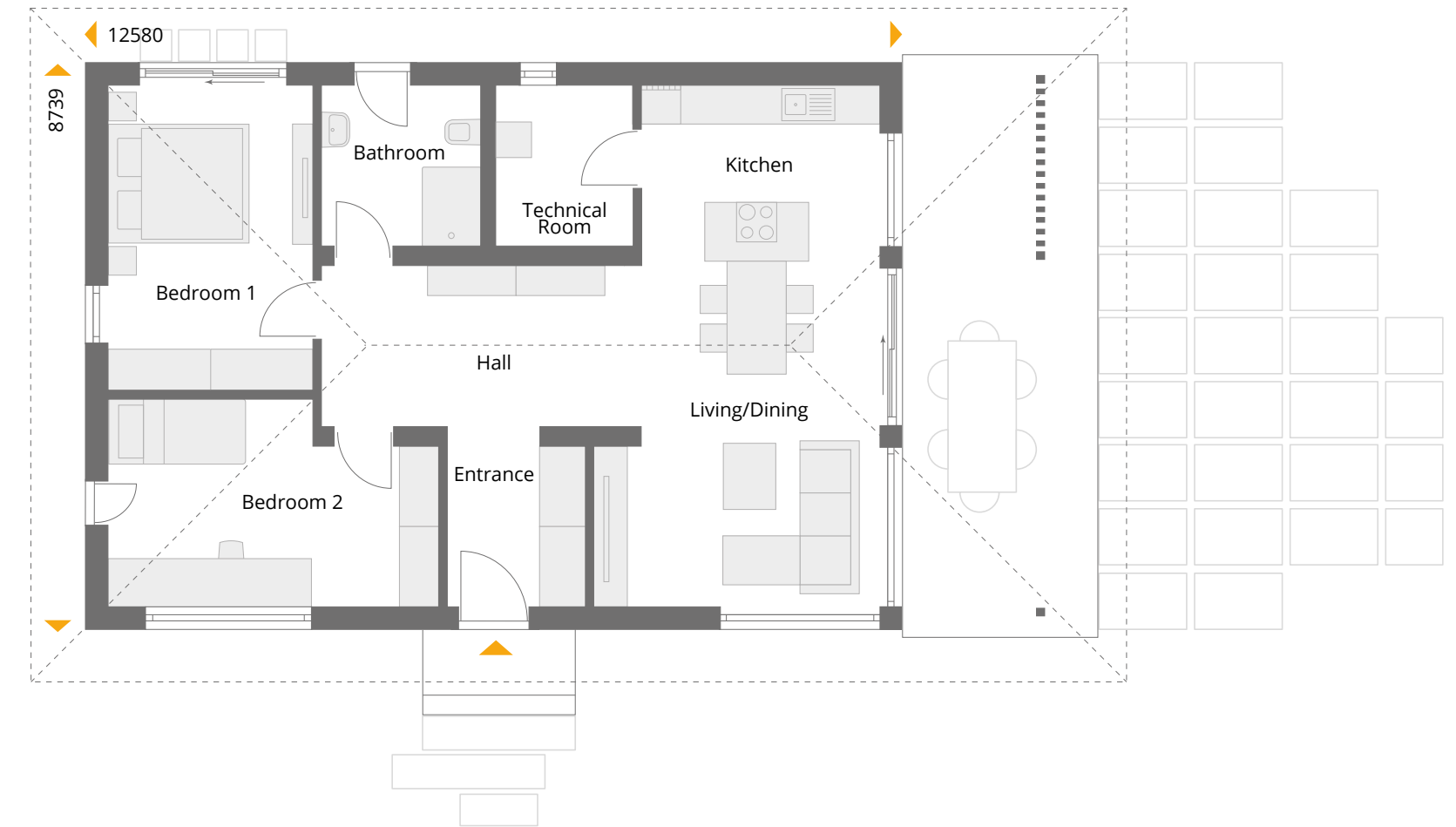
As standard, the house includes painting, tiles, vinyl flooring and roller shutters with an electric drive. It also includes a NEXT technology package with an air-water heat pump with underfloor heating, a ventilation system with heat recovery, Smart technology and a photovoltaic system with battery storage from top of floor slab/basement ceiling.





NEXT 90

NEXT 90	89,18 m²
Entrance	5,61 m ²
Hall	12,06 m ²
Living/Dining	20,91 m ²
Kitchen	10,11 m ²
Bedroom 1	14,68 m ²
Bedroom 2	14,73 m ²
Bathroom	5,95 m ²
Technical Room	5,13 m ²









NEXT 110

This angled bungalow requires a slightly larger plot, but benefits from an attractive and very useful sheltered terrace. The square at the angle forms a perfect sun deck as it's framed by two sides of the house, perfect positioning for eating, lounging and entertaining. The NEXT 110 is available with either a flat or a hipped roof and, both versions, with or without a patio roof.

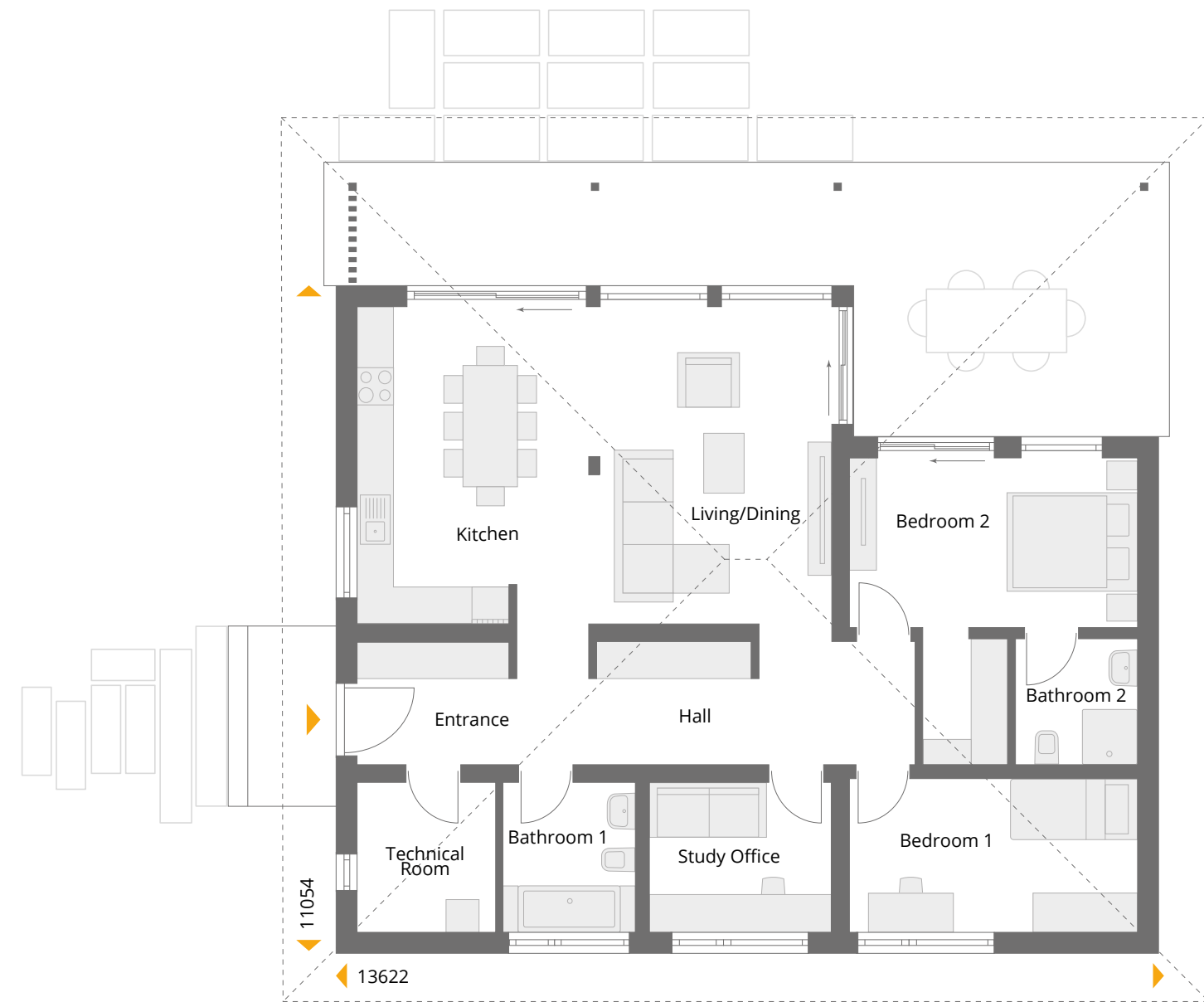
#HouseToGo #Turn-key #EnergyEfficiency #SmartHome

As standard, the house includes painting, tiles, vinyl flooring and roller shutters with an electric drive. It also includes a NEXT technology package with an air-water heat pump with underfloor heating, a ventilation system with heat recovery, Smart technology and a photovoltaic system with battery storage from top of floor slab/basement ceiling.





NEXT 110	110,25 m²
Entrance	5,00 m ²
Hall	13,89 m ²
Living/Dining	27,04 m ²
Kitchen	13,65 m ²
Bedroom 1	11,99 m ²
Bedroom 2	16,27 m ²
Study Office	7,33 m ²
Bathroom 1	5,33 m ²
Bathroom 2	4,18 m ²
Technical Room	5,57 m ²









NEXT 117ST

The generous glazing and the no-overhang gable roof emphasise the modern character of this modular bungalow. Two areas in the house, separated by a covered terrace, offer every comfort: on one side for relaxed living, cooking and dining, and the other side for sleeping, dressing and relaxing. An additional room is suitable as a study or guest room. Large sliding windows pave the way outside, while wall-high panoramic windows allow the living space and nature to merge and ensure an abundance of daylight in the house.

A show home for this bungalow can be seen in the Poing construction centre near Munich.

#HouseToGo #Turn-key #EnergyEfficiency #SmartHome

As standard, the house includes painting, tiles, vinyl flooring and roller shutters with an electric drive. It also includes a NEXT technology package with an air-water heat pump with underfloor heating, a ventilation system with heat recovery, smart technology and a photovoltaic system with battery storage from top of floor slab/basement ceiling.



NEXT 117ST

NEXT 117ST	117,01
Entrance	14,03 m ²
Living/Dining	39,98 m ²
Kitchen	12,51 m ²
Bedroom 1	12,03 m ²
Bedroom 2	16,54 m ²
Wardrobe	4,93 m ²
Bathroom 1	4,09 m ²
Bathroom 2	7,35 m ²
Technical Room	5,55 m ²









NEXT 140

With the NEXT 140 you no longer have to look for the best place in the sun! Enclosed by two buildings and the connecting wing, there's a beautiful covered outdoor space in the middle of this house. This puristic, elegant flat roof bungalow with its beautiful facade provides complete comfort, style and functionality. Choose your house with a flat or hipped roof, and with or without a terraced roof.

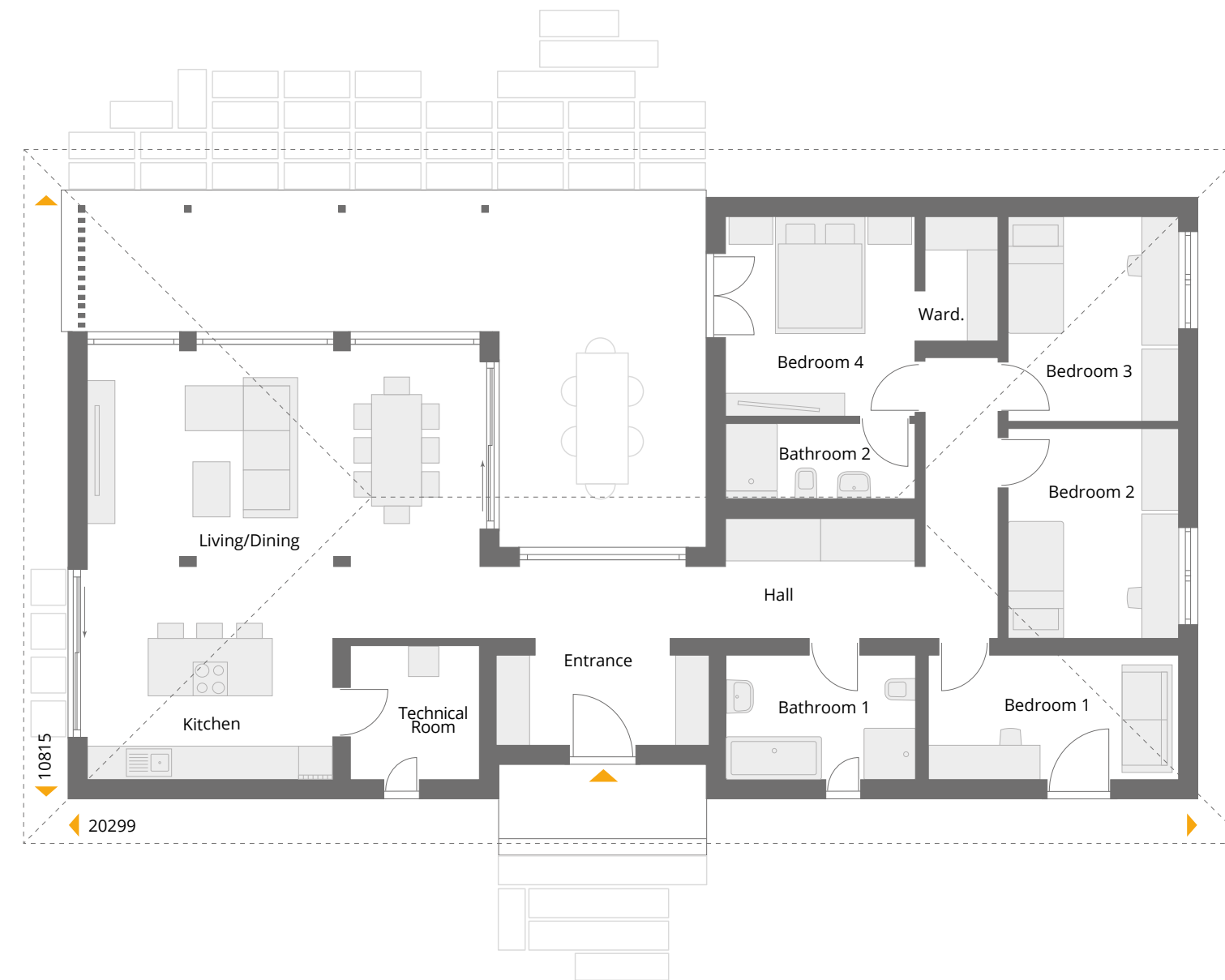
#HouseToGo #Turn-key #EnergyEfficiency #SmartHome

As standard, the house includes painting, tiles, vinyl flooring and roller shutters with an electric drive. It also includes a NEXT technology package with an air-water heat pump with underfloor heating, a ventilation system with heat recovery, Smart technology and a photovoltaic system with battery storage from top of floor slab/basement ceiling.





NEXT 140	139,31 m²
Entrance	6,74 m ²
Hall	19,70 m ²
Living/Dining	36,17 m ²
Kitchen	11,17 m ²
Bedroom 1	9,92 m ²
Bedroom 2	11,51 m ²
Bedroom 3	11,24 m ²
Bedroom 4	12,17 m ²
Wardrobe	3,06 m ²
Bathroom 1	7,51 m ²
Bathroom 2	4,59 m ²
Technical Room	5,53 m ²







NEXT traditional

Modular house with gable roofs

In addition to bungalows and villas, the NEXT range also offers modular houses with two living levels and a modern, protruding gable roof. A covered terrace, large balconies and wonderful panoramic windows characterise the architecture, while spacious open living areas and luxurious private rooms are perfect for relaxed family life. This is what your lifestyle living with modules can be!





NEXT 142S

If you're looking for an attractive family-friendly home for a narrower plot this is the perfect option. The house is only 8.31m wide, but is made extraordinary by the striking gable roof, modern windows and extra design elements above the main entrance. The plaster façade, combined with coloured wood panels, adds to the truly individual look. The spacious, open-plan design on the ground floor is enhanced by floor-to-ceiling windows, allowing both daylight and cleverly planned sightlines for excellent garden views.

The spaciousness also expands upwards where three bedrooms, one of which has an en-suite bathroom, the family bathroom and even the hallway and staircase have open ceilings right up to the roof ridge. A very clever design for a narrower plot!

#HouseToGo #Turn-key #EnergyEfficiency #SmartHome

As standard, the house includes painting, tiles, vinyl flooring and roller shutters with an electric drive. It also includes a NEXT technology package with an air-water heat pump with underfloor heating, a ventilation system with heat recovery, smart technology and a photovoltaic system with battery storage from top of floor slab/basement ceiling.



NEXT 142S

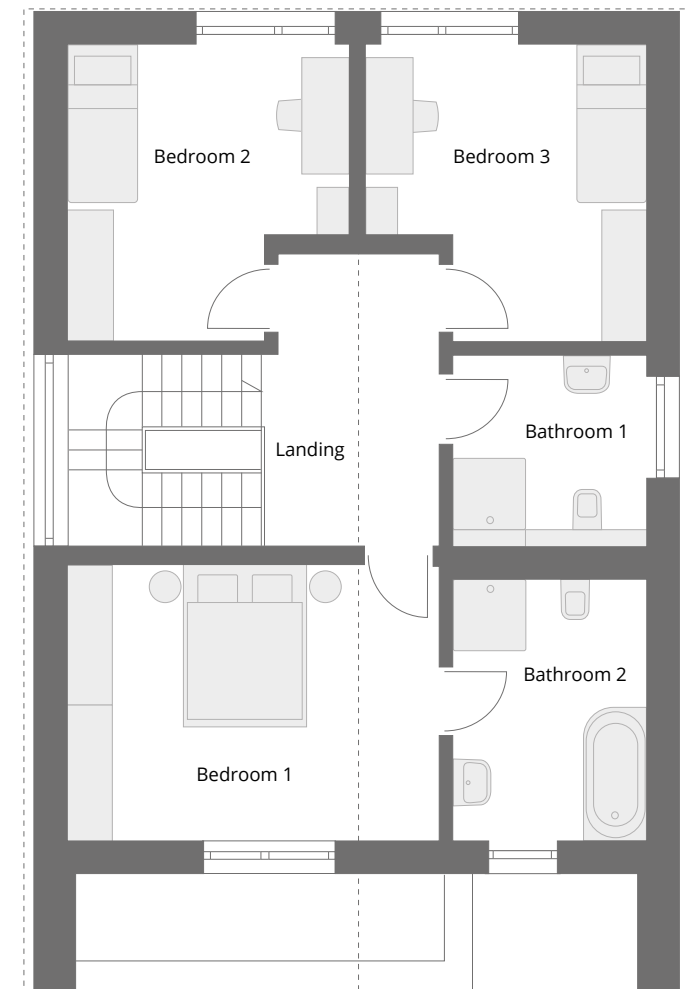
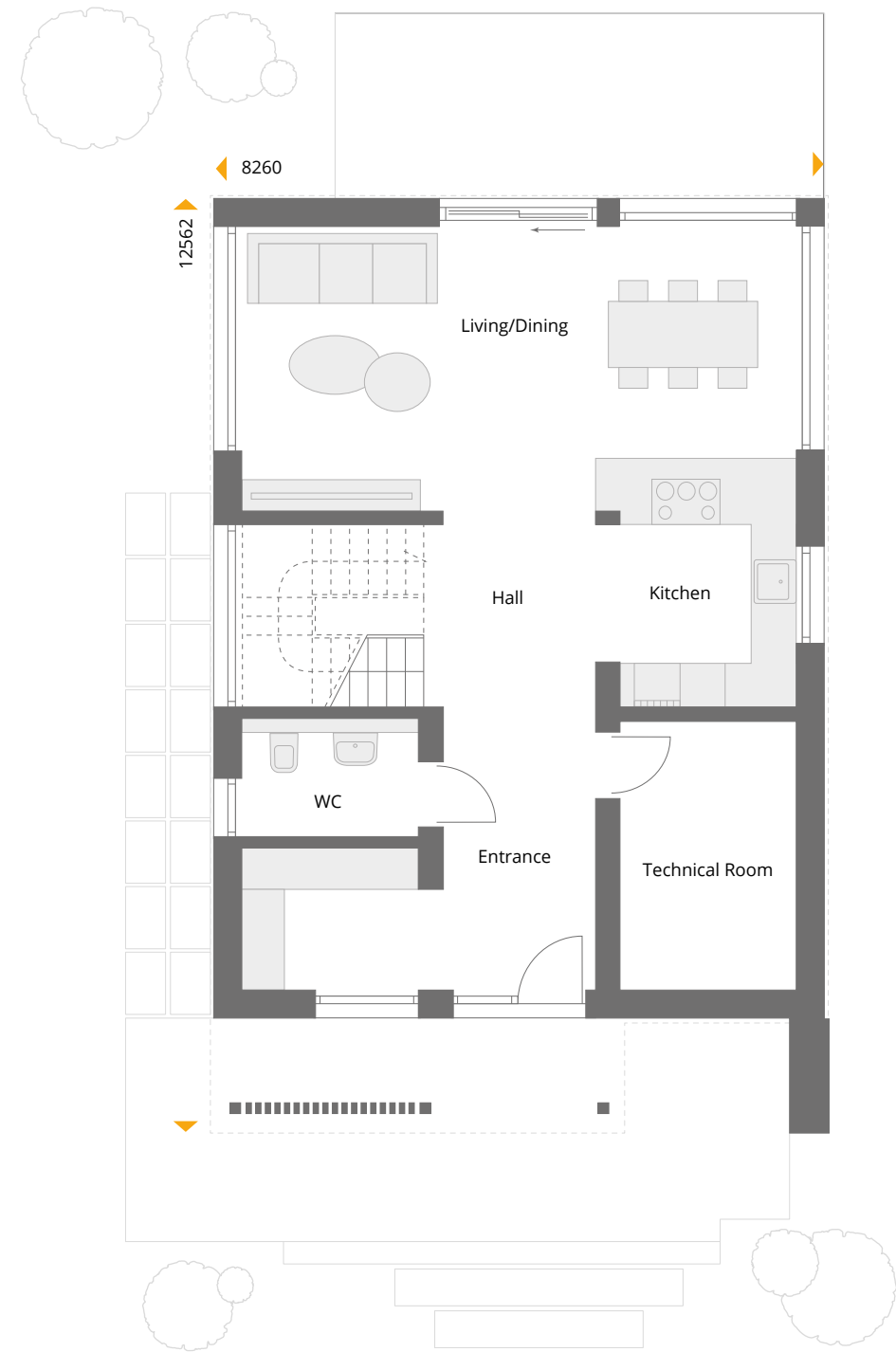
NEXT 142S **142,46 m²**

GROUND FLOOR AREA **72,32 m²**

- Entrance 12,93 m²
- Hall 12,14 m²
- Living/Dining 28,50 m²
- Kitchen 6,88 m²
- WC 3,27 m²
- Technical Room 8,60 m²

UPPER FLOOR AREA **70,14 m²**

- Landing 13,85 m²
- Bedroom 1 17,06 m²
- Bedroom 2 12,42 m²
- Bedroom 3 12,39 m²
- Bathroom 1 5,99 m²
- Bathroom 2 8,43 m²







NEXT 160ST

Designed for a narrower plot, this three-bedroom home benefits from the large garden-like extension to the back of the ground floor with its protective flat roof. The expansive roof overhang on the gable, the attractive triangle gable windows and the roof frame with its elegant wooden slats make this house truly memorable. A simpler side entrance and the extra-high front door add to the impact. On the upper floor three bedrooms and a family bathroom have open ceilings right up to the roof ridge. Bright and spacious, this home is perfect for a family with up to two children.

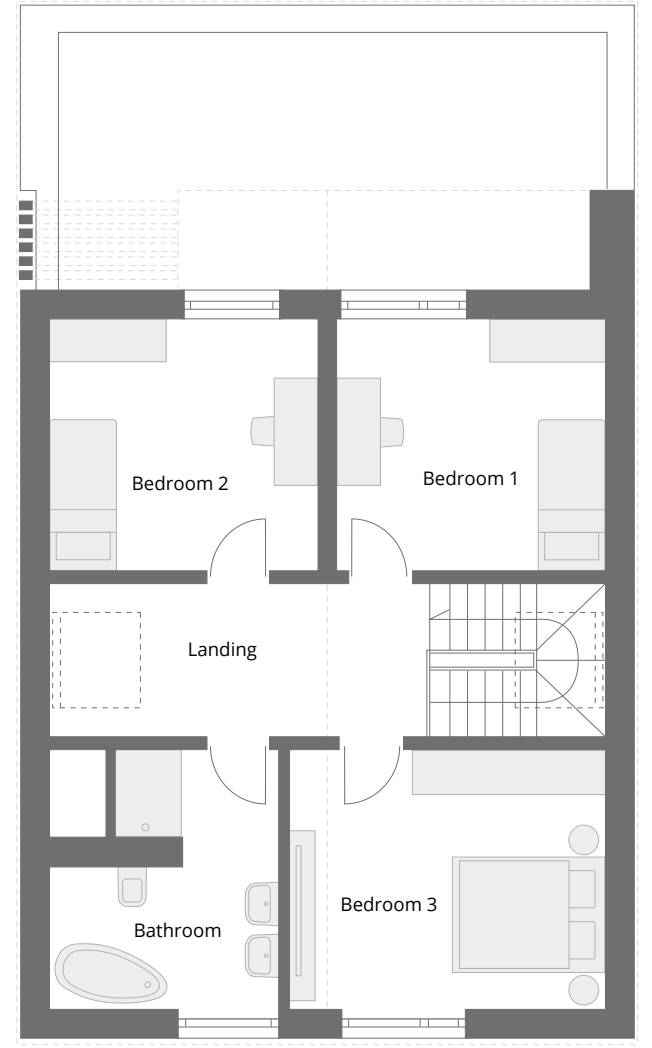
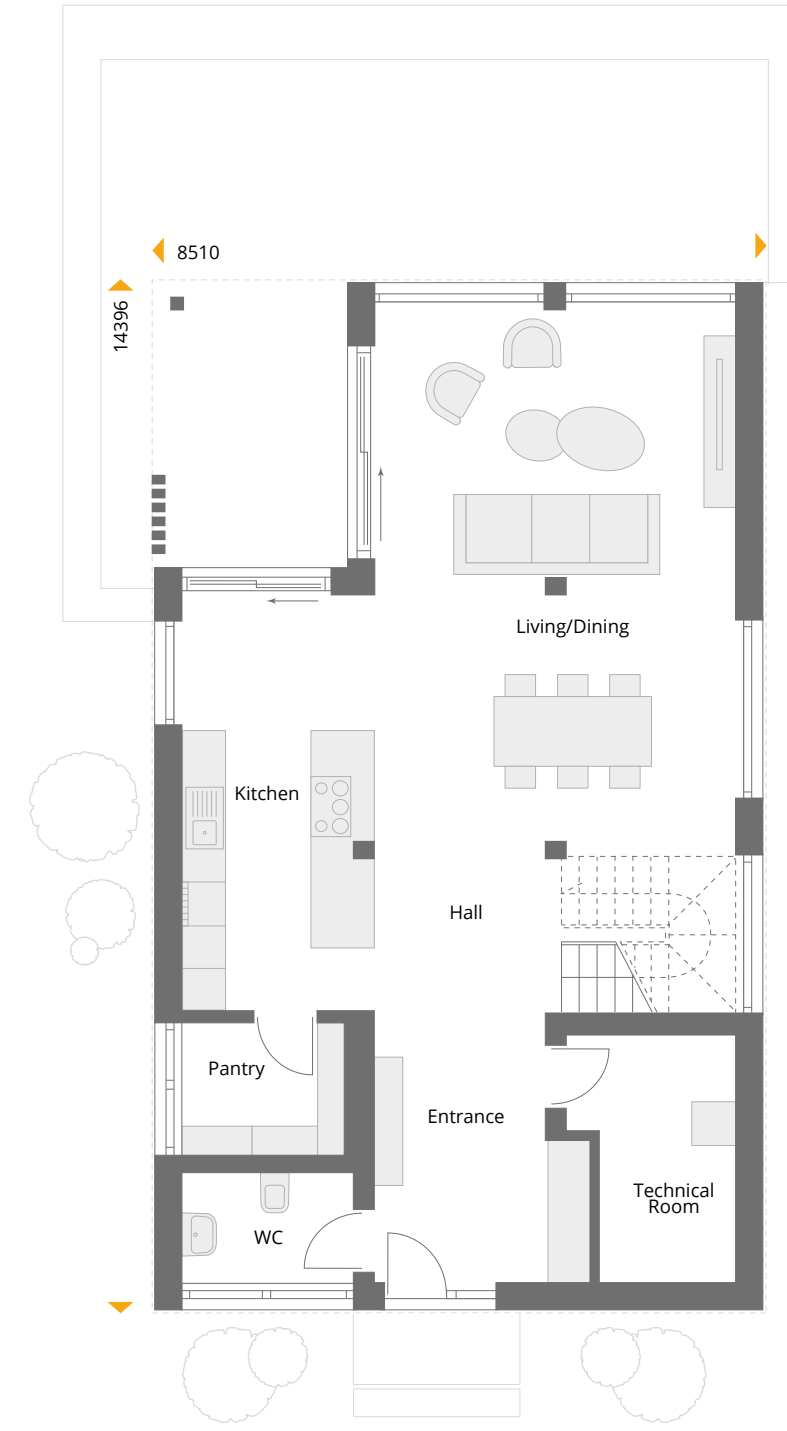
#HouseToGo #Turn-key #EnergyEfficiency #SmartHome

As standard, the house includes painting, tiles, vinyl flooring and roller shutters with an electric drive. It also includes a NEXT technology package with an air-water heat pump with underfloor heating, a ventilation system with heat recovery, Smart technology and a photovoltaic system with battery storage from top of floor slab/basement ceiling.



NEXT 160ST

NEXT 160ST	159,68 m²
GROUND FLOOR AREA	
Entrance	10,31 m ²
Hall	11,00 m ²
Living/Dining	38,81 m ²
Kitchen	15,67 m ²
Pantry	4,19 m ²
WC	3,67 m ²
Technical Room	7,27 m ²
UPPER FLOOR AREA	
Landing	16,55 m ²
Bedroom 1	13,22 m ²
Bedroom 2	13,22 m ²
Bedroom 3	16,13 m ²
Bathroom	9,64 m ²







NEXT 188ST

If you like to live with easy access to the outdoors this NEXT 188ST with its large covered terrace, is a perfect option. The large panoramic windows in the open-plan living, dining and cooking area also offer lots of light and access to the terrace. The façade design features an impressive wood panelled gallery with clear views to the gable roof and a floor-to-ceiling front door. The master bedroom with an en-suite bathroom is located in a flat-roofed extension on the ground floor and also has access to the terrace. Both bedrooms on the upper floor are open to the roof ridge, thanks to the attractive high gable windows and, together with separate storage and wardrobe areas, they promise a spacious living experience.

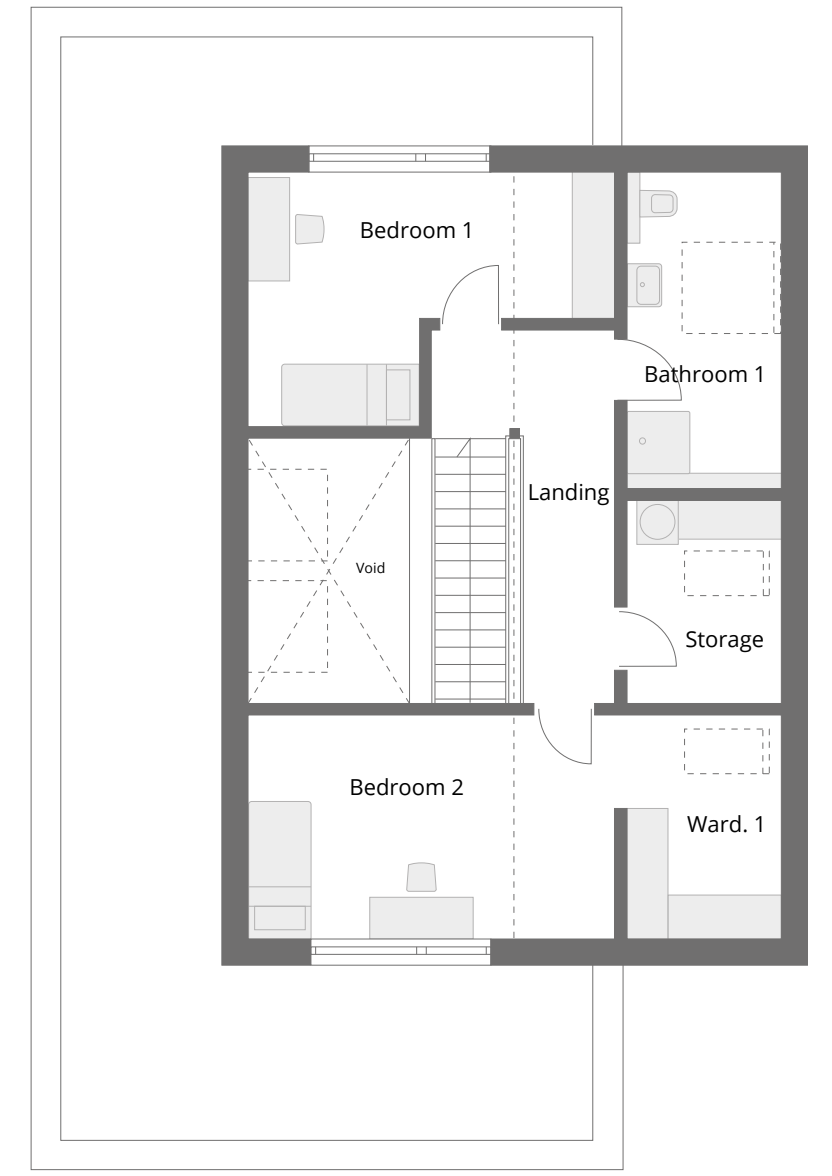
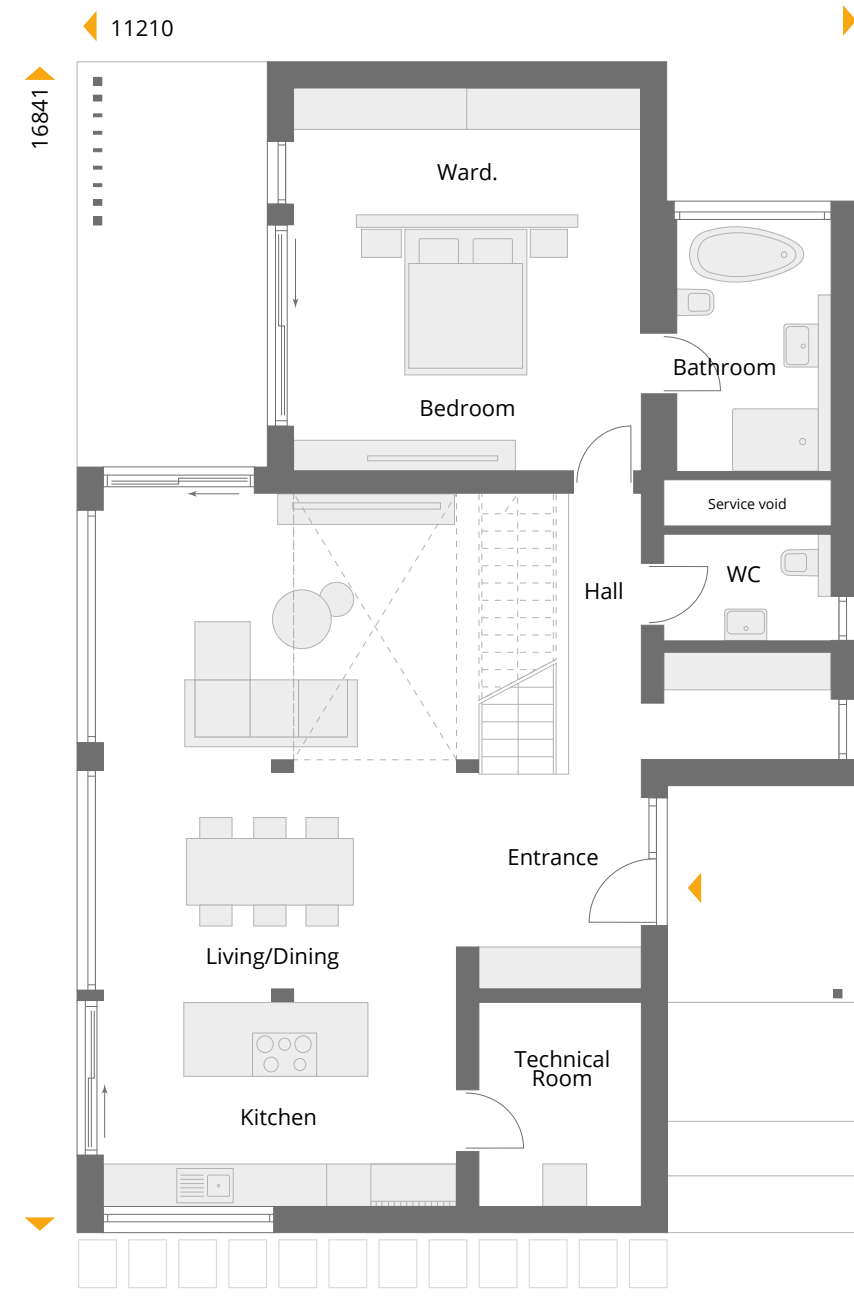
#HouseToGo #Turn-key #EnergyEfficiency #SmartHome

As standard, the house includes painting, tiles, vinyl flooring and roller shutters with an electric drive. It also includes a NEXT technology package with an air-water heat pump with underfloor heating, a ventilation system with heat recovery, Smart technology and a photovoltaic system with battery storage from top of floor slab/basement ceiling.



NEXT 188ST

NEXT 188ST	188,05 m²
GROUND FLOOR AREA	
Entrance	16,22 m ²
Hall	6,44 m ²
Living/Dining	33,00 m ²
Kitchen	18,85 m ²
Bedroom	17,90 m ²
Wardrobe	9,13 m ²
Bathroom	7,30 m ²
WC	3,69 m ²
Technical Room	6,90 m ²
UPPER FLOOR AREA	
Landing	13,72 m ²
Bedroom 1	15,09 m ²
Bedroom 2	16,59 m ²
Bathroom 1	9,54 m ²
Wardrobe 1	7,12 m ²
Storage	6,56 m ²







NEXT 203ST

A family of four will have plenty of space to live in this stunning 200m² home. The spacious ground floor of this modular house has beautiful visual axes, with a large kitchen, adjacent dining area and a screened lounge corner. The graceful staircase 'floats' against a glass backdrop. On the upper floor, parents can enjoy their private area with a master bedroom, dressing room and en-suite bathroom. There is also a second bathroom and two bedrooms on the upper floor. The high knee wall and the opening of the rooms up to the ridge ensure space and an airy impression. The 33m² balcony is accessible via the hallway.

#HouseToGo #Turn-key #EnergyEfficiency #SmartHome

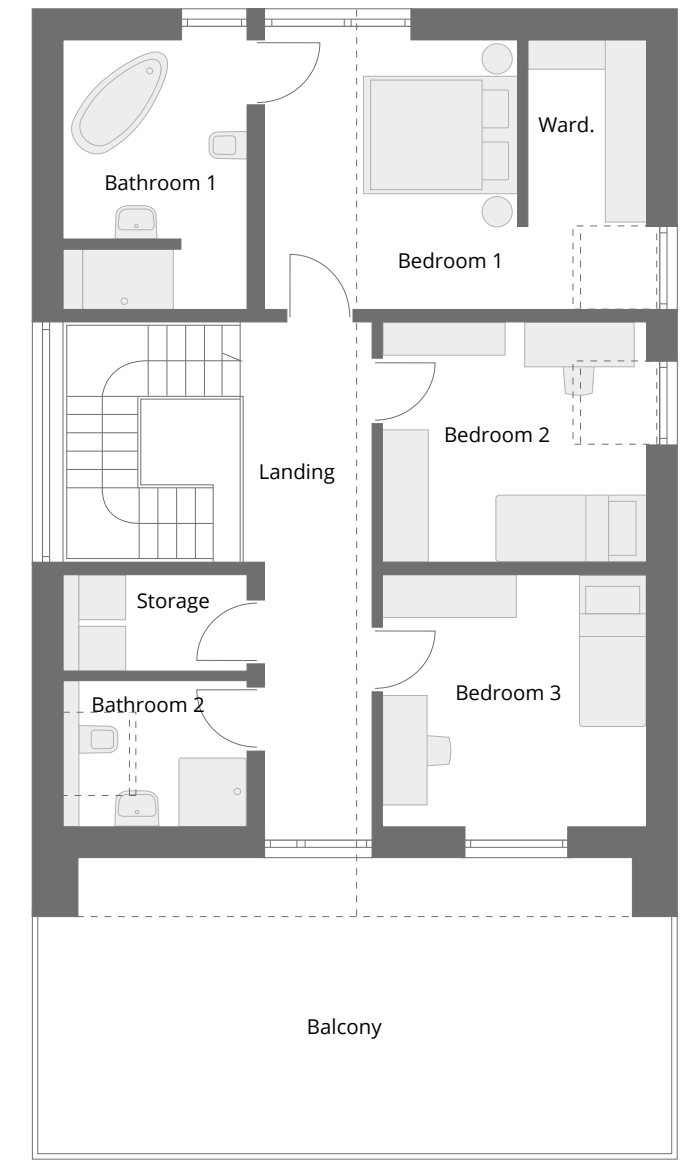
As standard, the house includes painting, tiles, vinyl flooring and roller shutters with an electric drive. It also includes a NEXT technology package with an air-water heat pump with underfloor heating, a ventilation system with heat recovery, smart technology and a photovoltaic system with battery storage from top of floor slab/basement ceiling.



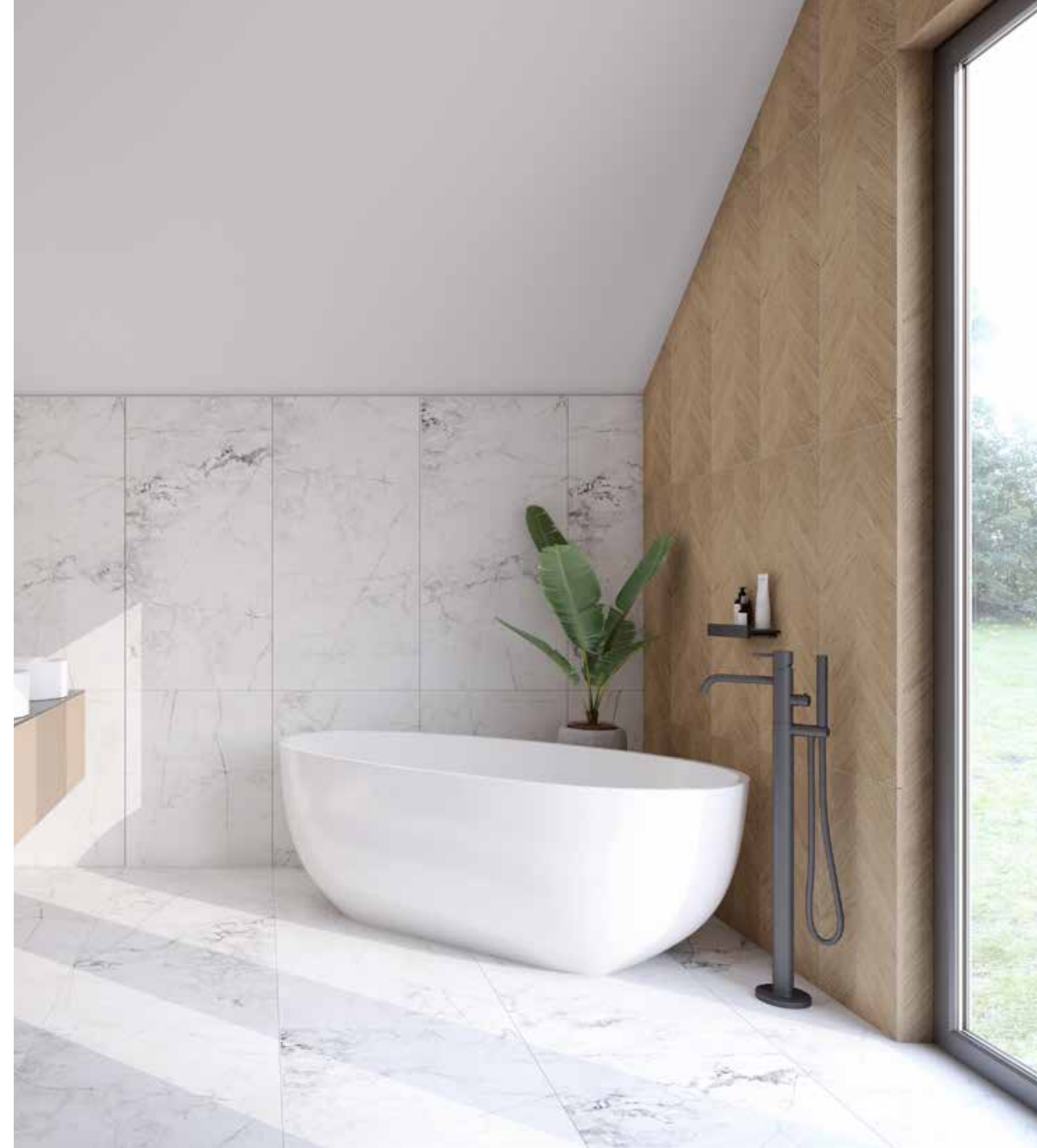


NEXT 203ST

NEXT 203ST	202,77 m²
GROUND FLOOR AREA 92,19 m²	
Entrance	14,45 m ²
Hall	7,90 m ²
Living	19,96 m ²
Dining	18,18 m ²
Kitchen	20,05 m ²
WC	2,78 m ²
Technical Room	8,87 m ²
UPPER FLOOR AREA 110,58 m²	
Landing	17,31 m ²
Bedroom 1	12,90 m ²
Bedroom 2	11,79 m ²
Bedroom 3	12,35 m ²
Bathroom 1	8,76 m ²
Bathroom 2	4,97 m ²
Wardrobe	6,00 m ²
Storage	3,02 m ²
Balcony	33,46 m ²







NEXT villas

Modules built with height

Next house modules can also be stacked in wonderful ways. In the following pages you'll be delighted when you see modern villas with extraordinary designs and the highest levels of living comfort. We believe these designs reflect the zeitgeist – and are built for the future with well- thought-out floor plans, bright living spaces, environmentally friendly building technology and sustainable wooden construction. Most of the villas come with balconies. But we also offer these houses without a balcony, with no change to the interior floor plan. Take a look at the options and prices here: www.danwoodnext.de





NEXT 145FT

This modular cubic villa with its balcony is an absolute eye-catcher. Inside, the transparency created by the floor-to-ceiling panoramic windows and walls creates a magnificent feeling of space. This is underlined by the extensive openness on the ground floor, where even the stairs are framed by glass. The upper floor offers a comfortable sleeping area with a window seat, dressing room and en-suite bathroom, a spacious study and a hallway with access to the covered balcony.

This villa can be seen as a show home in the 'Home & Garden' exhibition in Fellbach near Stuttgart.

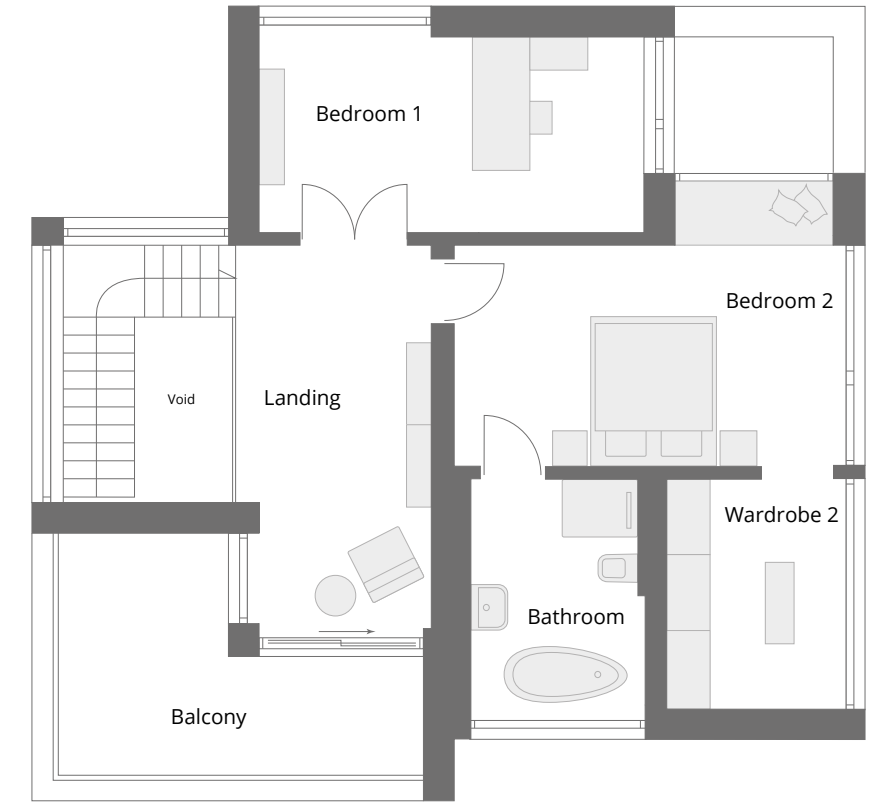
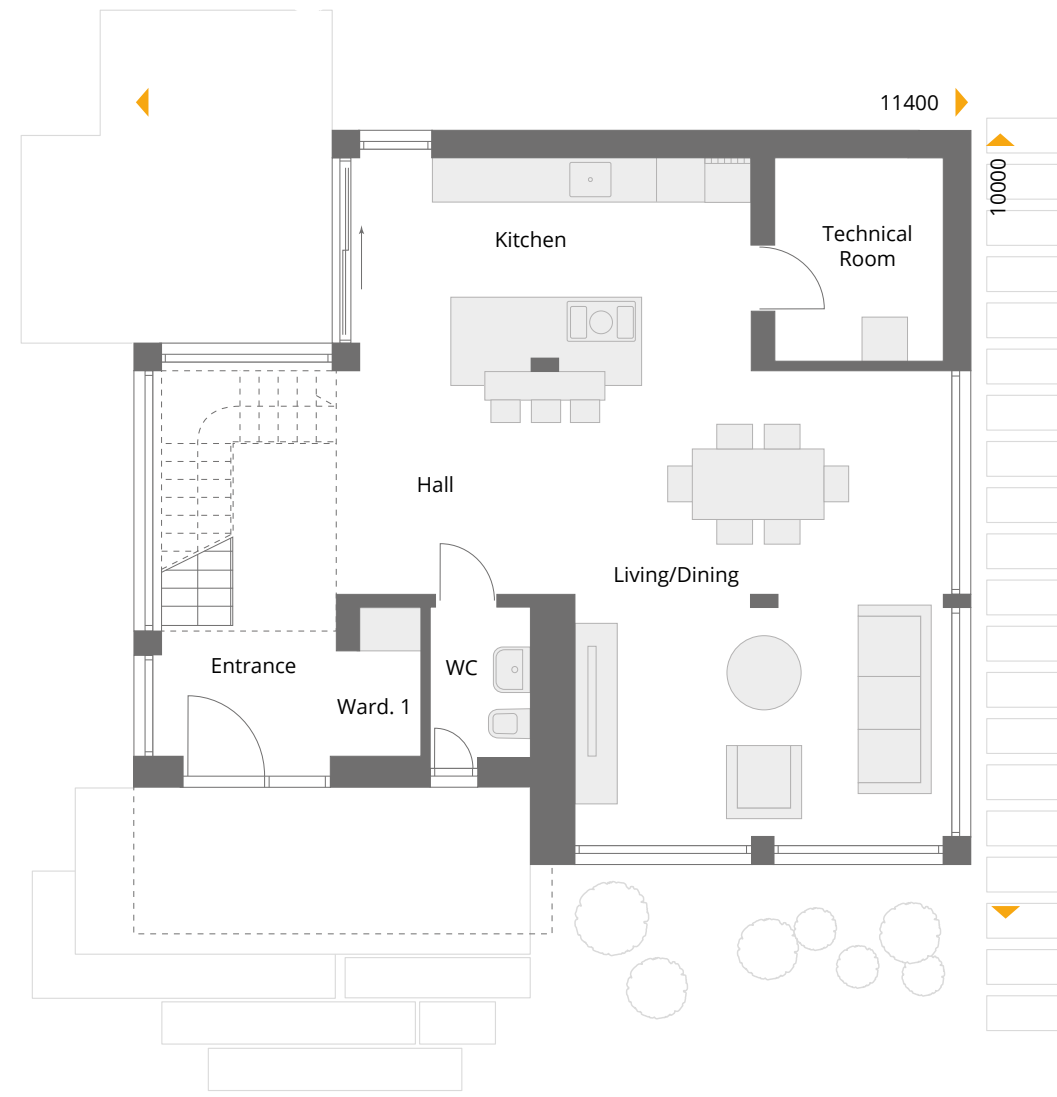
#HouseToGo #Turn-key #EnergyEfficiency #SmartHome

As standard, the house includes painting, tiles, vinyl flooring and roller shutters with an electric drive. It also includes a NEXT technology package with an air-water heat pump with underfloor heating, a ventilation system with heat recovery, smart technology and a photovoltaic system with battery storage from top of floor slab/basement ceiling.



NEXT 145FT

NEXT 145FT	161,04 m²
GROUND FLOOR AREA	
Entrance	5,25 m ²
Hall	17,15 m ²
Living/Dining	31,29 m ²
Kitchen	15,41 m ²
WC	2,81 m ²
Technical Room	6,36 m ²
Wardrobe 1	2,15 m ²
UPPER FLOOR AREA	
Landing	18,50 m ²
Bedroom 1	14,49 m ²
Bedroom 2	17,29 m ²
Wardrobe 2	7,38 m ²
Bathroom	7,36 m ²
Balcony	15,60 m ²







NEXT 151

This straight-lined villa can be admired from all sides and on both floors - regardless of whether it has a flat or hipped roof. The high, harmoniously arranged panoramic windows create an attractive rear view of the garden, while the modules with the balcony above enhance the front. Equally suitable for families and couples, it has three bedrooms and two shower rooms on the upper floor, and plenty of space for cooking, eating and relaxing on the ground floor. A comfortable and environmentally friendly home for people who love good design.

#HouseToGo #Turn-key #EnergyEfficiency #SmartHome

As standard, the house includes painting, tiles, vinyl flooring and roller shutters with an electric drive. It also includes a NEXT technology package with an air-water heat pump with underfloor heating, a ventilation system with heat recovery, Smart technology and a photovoltaic system with battery storage from top of floor slab/basement ceiling.





NEXT 151 177,05 m²

GROUND FLOOR AREA 83,34 m²

Entrance 10,17 m²

Hall 10,36 m²

Living/Dining 30,41 m²

Kitchen 13,89 m²

WC 3,95 m²

Pantry 2,72 m²

Technical Room 7,53 m²

Wardrobe 4,31 m²

UPPER FLOOR AREA 93,71 m²

Landing 17,49 m²

Bedroom 1 10,19 m²

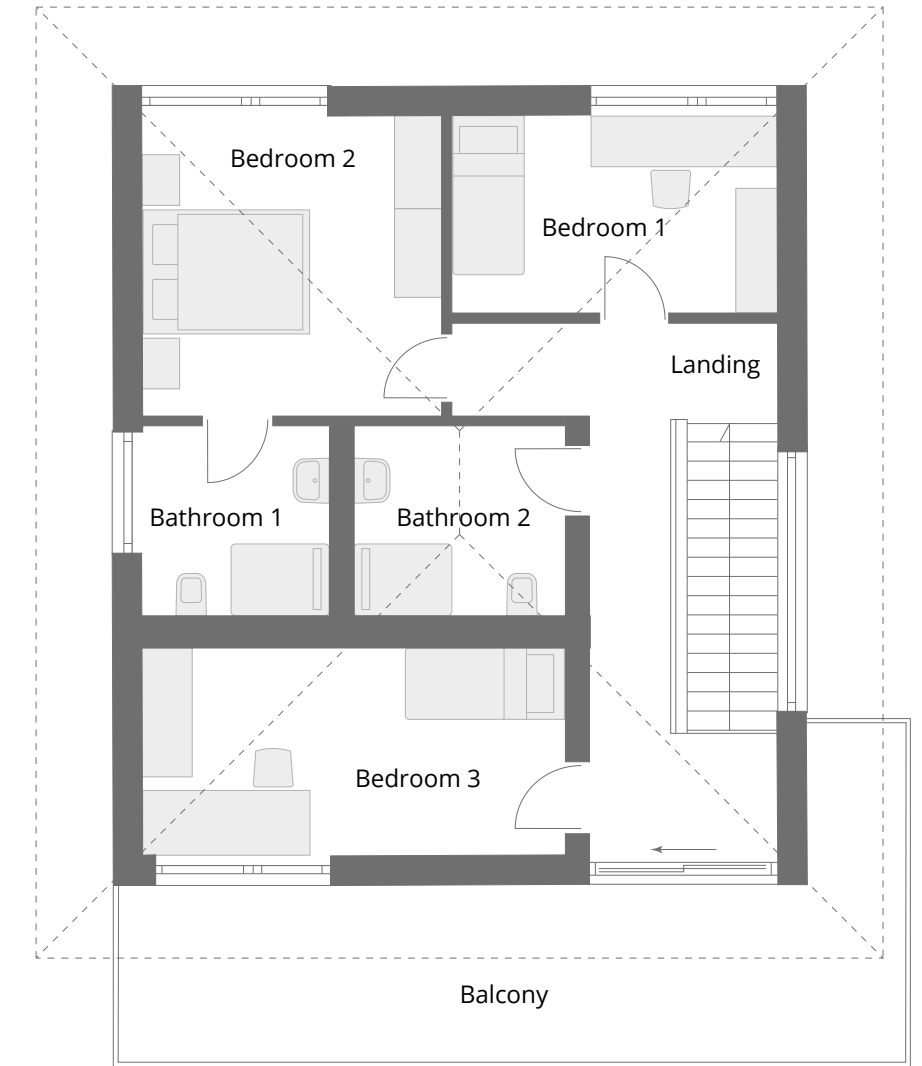
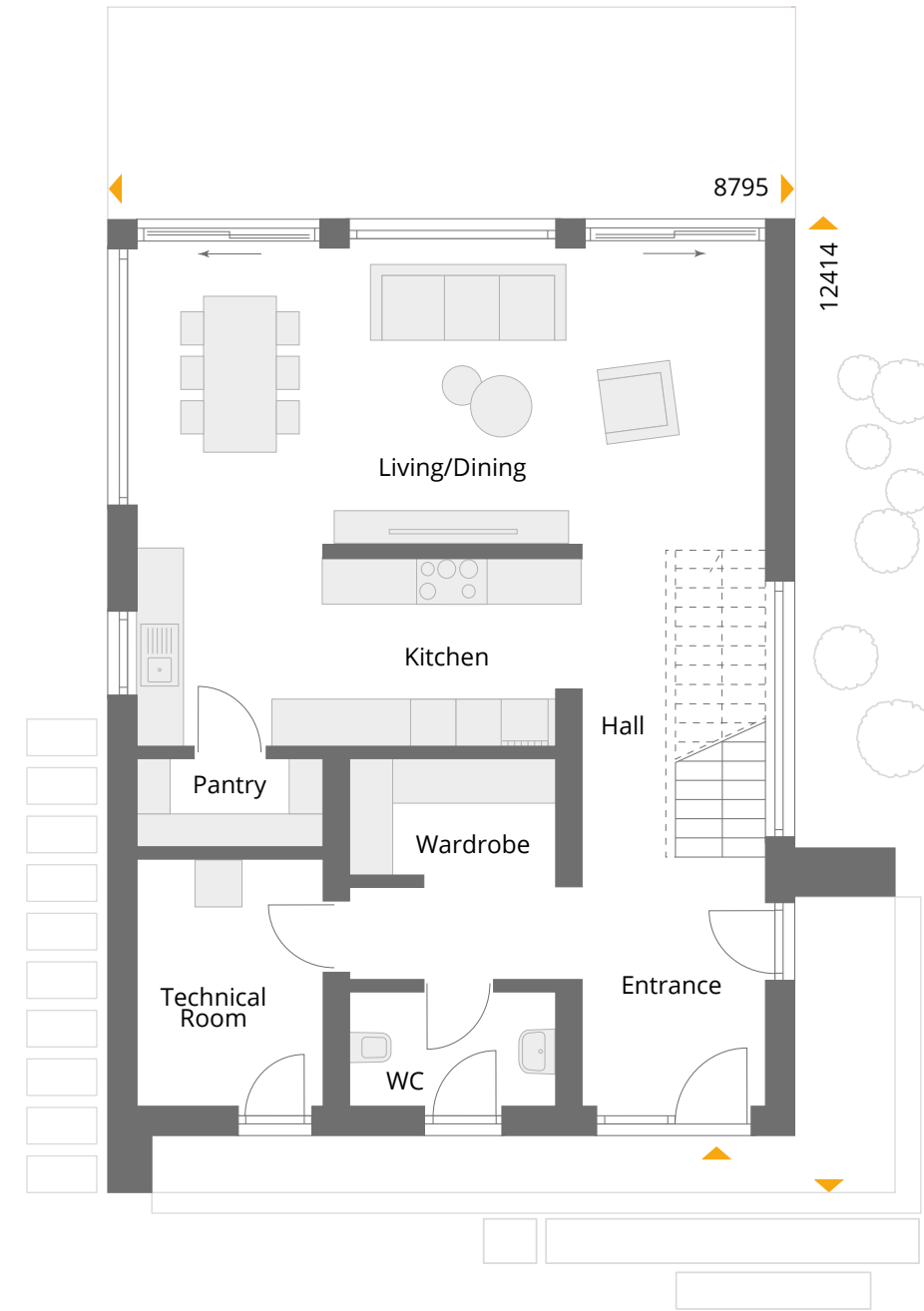
Bedroom 2 14,35 m²

Bedroom 3 13,69 m²

Bathroom 1 5,73 m²

Bathroom 2 6,48 m²

Balcony 25,78 m²









NEXT 169

With its flat roof and clear lines this modular villa reflects the Bauhaus style. Staggered modules create easily usable outdoor areas, such as the covered terrace and entrance area and the corner balcony. Floor-to-ceiling windows not only look attractive but ensure beautiful views and exceptionally good interior light. The largely open ground floor is well laid out with the hallway and pantry offering plenty of storage space. On the upper floor there is a dressing room and a bathroom attached to the master bedroom, and an extra bathroom for the two children's rooms. The gallery provides excellent panoramic views.

#HouseToGo #Turn-key #EnergyEfficiency #SmartHome

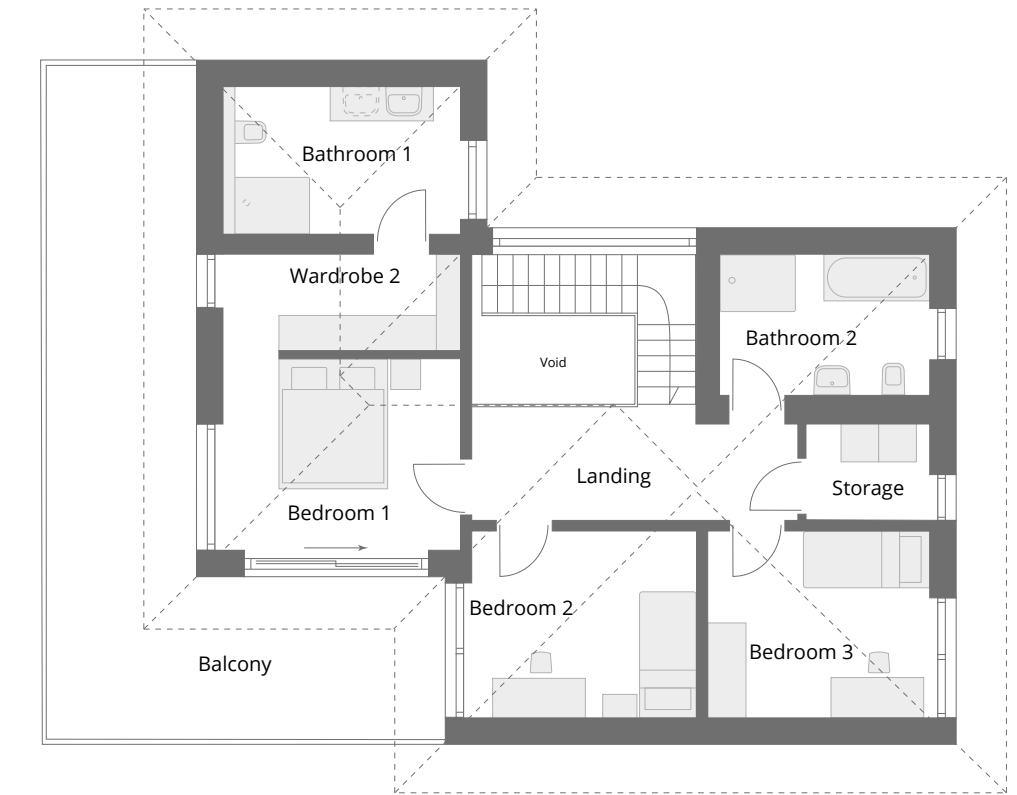
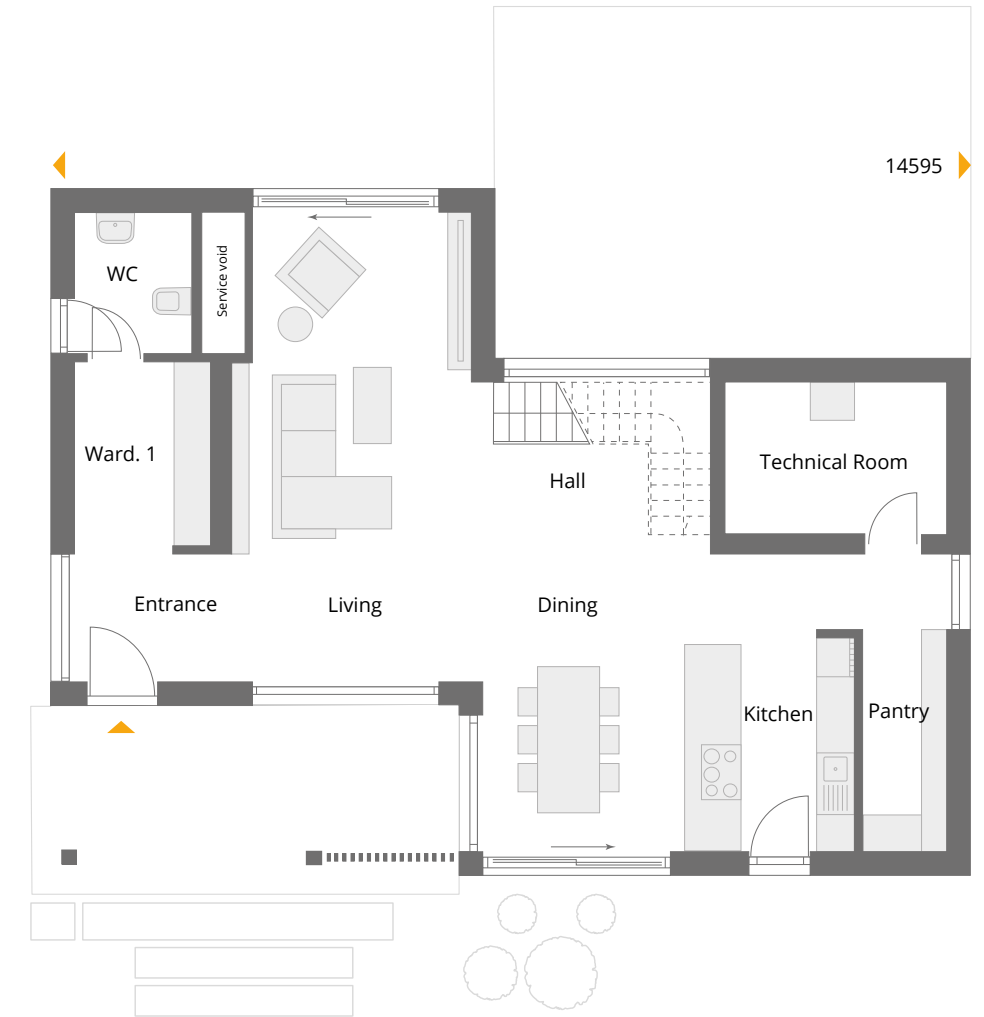
As standard, the house includes painting, tiles, vinyl flooring and roller shutters with an electric drive. It also includes a NEXT technology package with an air-water heat pump with underfloor heating, a ventilation system with heat recovery, smart technology and a photovoltaic system with battery storage from top of floor slab/basement ceiling.

NEXT 169FT





NEXT 169	207,61 m²
GROUND FLOOR AREA 96,74 m²	
Hall	8,71 m ²
Entrance	5,03 m ²
Wardrobe 1	6,51 m ²
Living	28,45 m ²
Dining	18,23 m ²
Kitchen	10,81 m ²
WC	4,18 m ²
Pantry	6,31 m ²
Technical Room	8,51 m ²
UPPER FLOOR AREA 110,87 m²	
Landing	14,11 m ²
Bedroom 1	11,88 m ²
Bedroom 2	10,83 m ²
Bedroom 3	10,69 m ²
Bathroom 1	8,59 m ²
Bathroom 2	7,71 m ²
Wardrobe 2	5,92 m ²
Storage	3,08 m ²
Balcony	38,06 m ²









NEXT 170

The NEXT 170 embodies the perfect symbiosis of design and function. The modular city villa with lots of glass is a modern home for two or three and offers plenty of luxurious space and a great gallery. The flat roof allows the floor-to-ceiling panoramic windows and the integrated corner balcony to be shown to their best advantage and at the same time protects the balcony and house entrance from rain.

#HouseToGo #Turn-key #EnergyEfficiency #SmartHome

As standard, the house includes painting, tiles, vinyl flooring and roller shutters with an electric drive. It also includes a NEXT technology package with an air-water heat pump with underfloor heating, a ventilation system with heat recovery. Smart technology and a photovoltaic system with battery storage from top of floor slab/basement ceiling.

Some illustrations show optional additional features.

NEXT 170FT



150
Some illustrations show optional additional features.

151



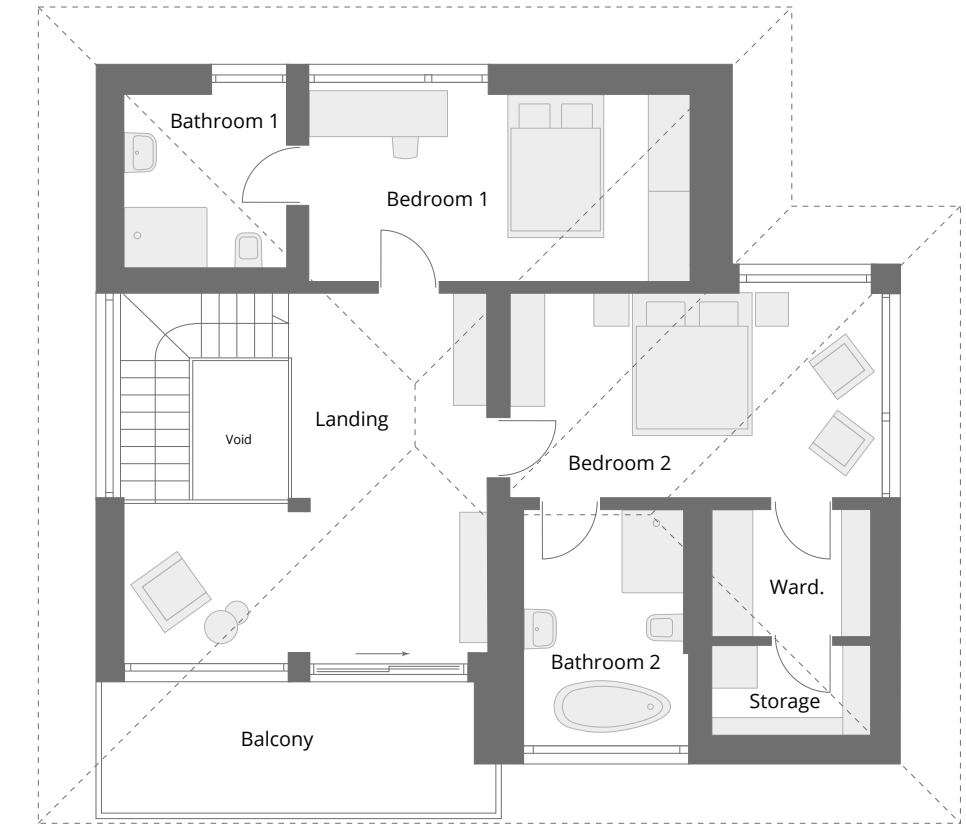
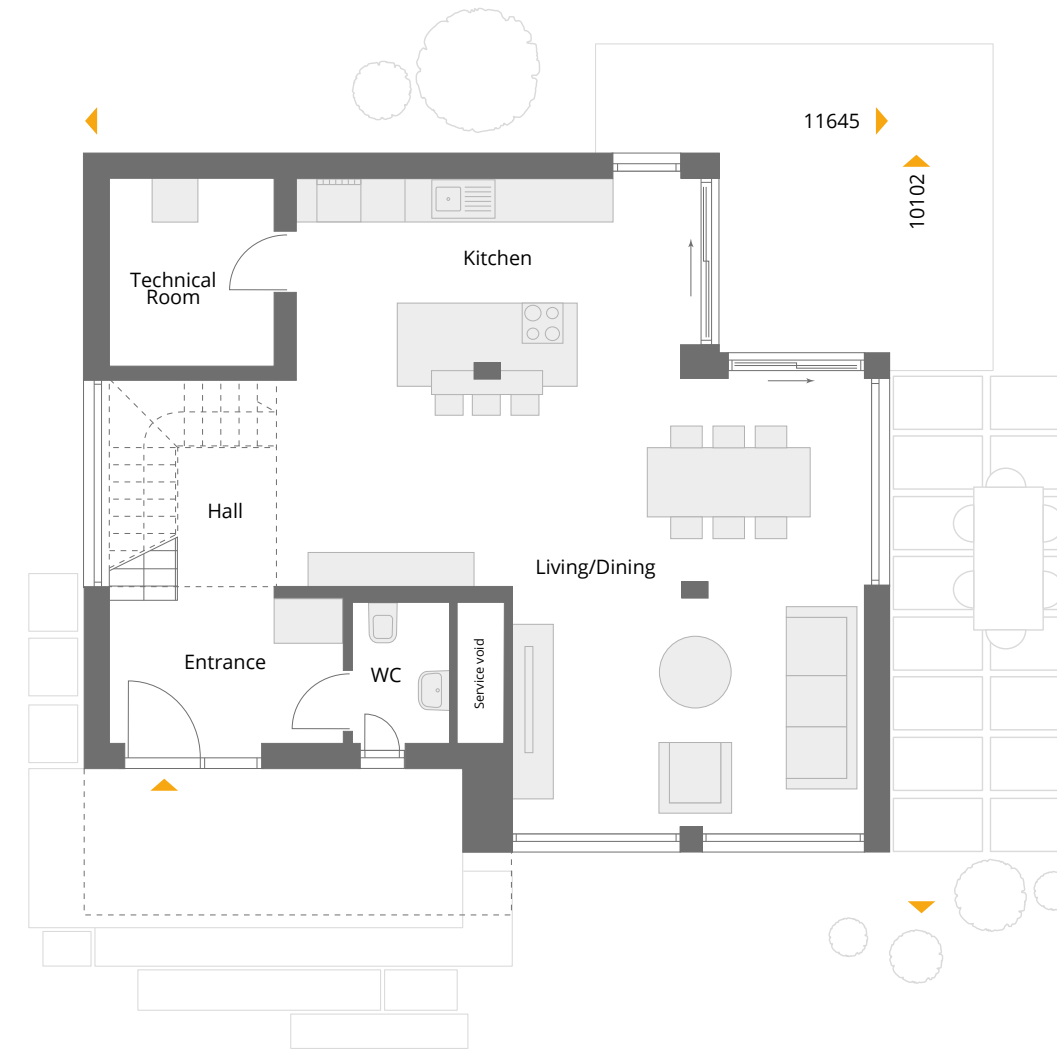
NEXT 170 170,02 m²

GROUND FLOOR AREA 82,96 m²

Entrance	7,44 m ²
Hall	7,13 m ²
Living/Dining	43,02 m ²
Kitchen	16,03 m ²
WC	2,84 m ²
Technical Room	6,50 m ²

UPPER FLOOR AREA 87,06 m²

Landing	24,96 m ²
Bedroom 1	15,15 m ²
Bedroom 2	15,80 m ²
Wardrobe	4,29 m ²
Storage	3,05 m ²
Bathroom 1	6,02 m ²
Bathroom 2	7,76 m ²
Balcony	10,03 m ²









NEXT 176

Architecture to make you feel good! This modern modular villa is a perfect home for a family of up to four, or a luxurious home for two. Whether you choose a flat or hipped roof it comes with lots of glass and a fantastic feeling of space.

#HouseToGo #Turn-key #EnergyEfficiency #SmartHome

As standard, the house includes painting, tiles, vinyl flooring and roller shutters with an electric drive. It also includes a NEXT technology package with an air-water heat pump with underfloor heating, a ventilation system with heat recovery. Smart technology and a photovoltaic system with battery storage from top of floor slab/basement ceiling.





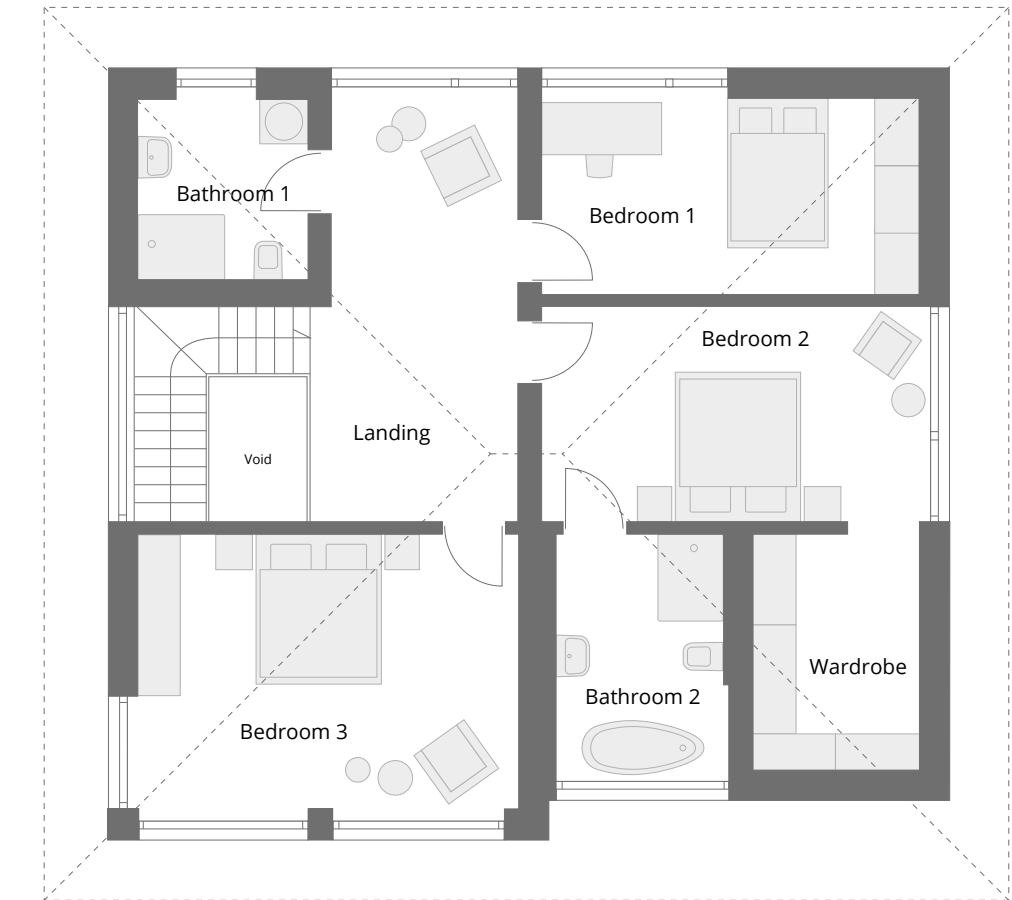
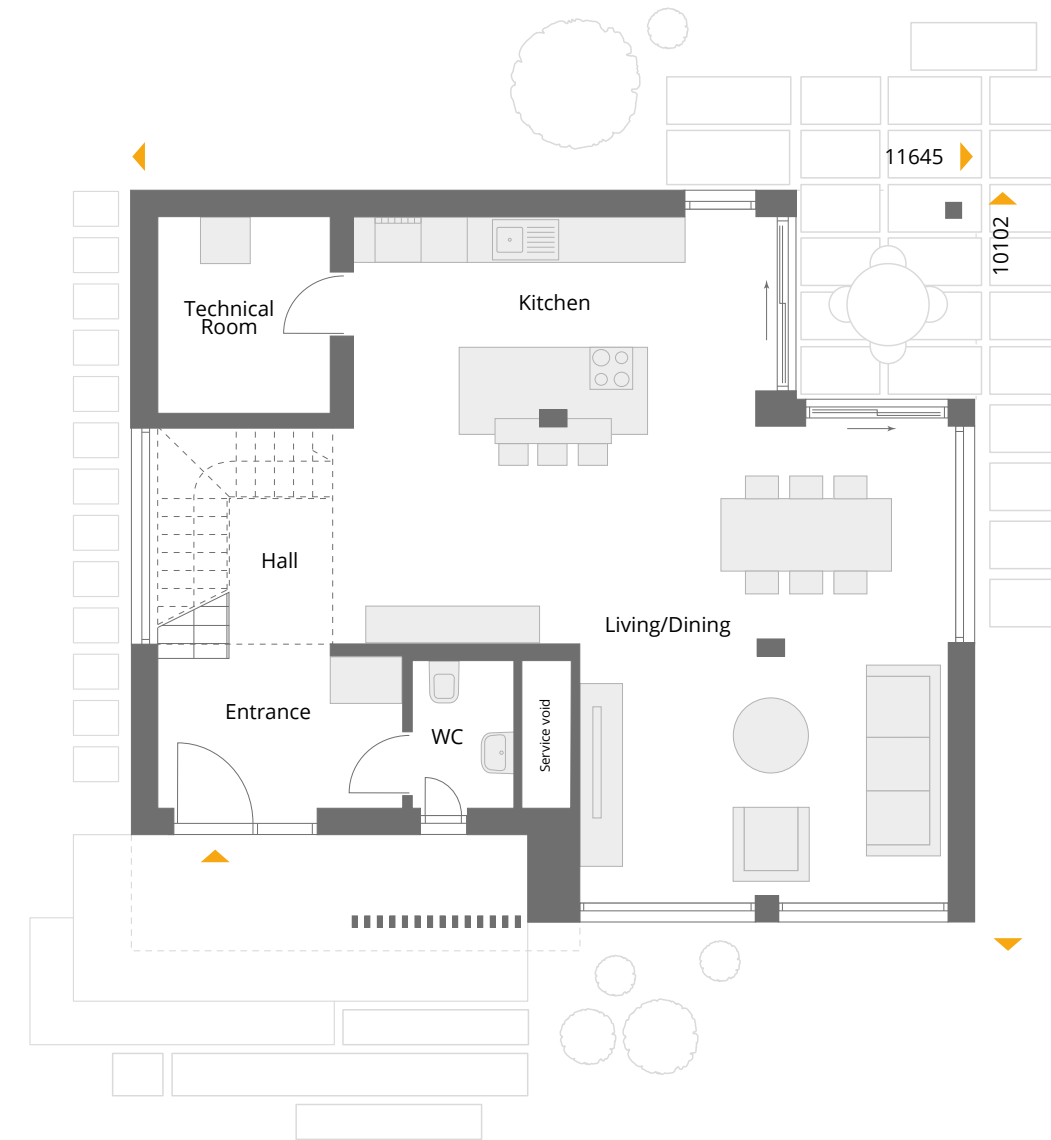
NEXT 176 **175,66 m²**

GROUND FLOOR AREA **82,96 m²**

Hall	7,13 m ²
Entrance	7,44 m ²
Living/Dining	43,02 m ²
Kitchen	16,03 m ²
WC	2,84 m ²
Technical Room	6,50 m ²

UPPER FLOOR AREA **92,70 m²**

Landing	20,61 m ²
Bedroom 1	14,40 m ²
Bedroom 2	15,80 m ²
Bedroom 3	20,30 m ²
Bathroom 1	6,02 m ²
Bathroom 2	7,76 m ²
Wardrobe	7,81 m ²







Show homes

Come and see

You can see the potential of the 'NEXT by Danwood' range at our show homes in Poing near Munich and Fellbach near Stuttgart, in Germany.

Show home in Poing

The Next modular bungalow show home in Poing, near Munich in Germany, demonstrates the stunning solutions and construction that a modular system offers. Wall-wide and floor-to-ceiling panoramic windows flood the rooms with daylight and create fantastic sight lines in this 115 square metre home. You have to experience this impressive feeling of space at first hand! This show home clearly demonstrates that modular construction meets the highest standards of design, comfort and energy efficiency.

Show home in Fellbach

The Next show home in Fellbach, near Stuttgart in Germany, is 145 square metres and shows that modular construction in unusual designs is also possible on two floors. Living, eating and cooking are concentrated on the spacious ground floor. The bedroom, dressing room and en-suite bathroom, office, balcony and a cosy window seat are accessible via a 'floating' staircase. You can also expect a light-flooded ambience and the latest energy-efficient and smart building technology.

NEXT-Musterhaus

Bauzentrum Poing

Senator-Gerauer-Straße 25, Nr. 13

85586 Poing / Grub

NEXT-Musterhaus

Ausstellung "Eigenheim & Garten"

Fellbach bei Stuttgart

Höhenstraße 21, Nr. 49, 70736 Fellbach

NEXT Poing

The NEXT show home in Poing won the 'Bungalow Design' category in the Golden Cubes Awards in 2023, and first place in the Hausbau Design Award in the energy efficiency category.













About Danwood

Danwood is one of the most important manufacturers of turnkey prefabricated wooden houses in Europe. Beautiful architecture, well-thought-out, practical floor plans and transparent prices combined with the highest quality of materials and craftsmanship have been impressing our customers for almost 30 years.

The heart of our company is the production facility, which is located in the Podlaskie region of eastern Poland. This region is famous for its enchanting nature and the centuries-old tradition of wooden construction. From here we deliver around 30 houses every week to construction sites across Europe, where our professional in-house construction crews make our customers' dreams come true. Danwood has been in the home- building business since 1995, currently employs over 2,300 people and has built more than 17,000 homes during that time.

In addition to the successful brands DAN-WOOD House, DAN-WOOD Family and VISION by Danwood, NEXT by Danwood is the newest brand from Danwood S.A.



N E X T
by Danwood



Danwood S.A.

Justus-von-Liebig-Str. 7

12489 Berlin

sales@dan-wood.eu

Edition April 2024

