

N E X T HOLIDAY
by Danwood



Relax in style in a modern, modular holiday home

Are you looking for a perfect holiday or weekend home where you can put your feet up in perfect comfort and space? Our new 'NEXT Holiday by Danwood' homes may be exactly what you're looking for. NEXT Holiday is a range of cleverly planned mini dream houses. Thanks to their modern construction, these ready-to-move-in residential modules can be simply floated onto your property by crane. Choose your preferred size and features and enjoy fast, stress-free construction and guaranteed comfort just the way you want it.



Flexible designs, full of style

Nature and design in harmony

Our modular holiday and weekend homes are small architectural wonders that create harmony between nature and design. Clear lines and generous glass fronts open up the house to light and nature, while the minimalist interior exudes calm and elegance. Each module is like a puzzle piece that fits perfectly into the landscape, while offering the freedom to be designed according to individual needs.

Sustainable and innovative

With sustainable materials and innovative technologies, each holiday home is not only an oasis of relaxation, but also a statement for combining environmental awareness and contemporary living - even in a temporary home.





Unrestricted views throughout

A particularly eye-catching feature of our NEXT Holiday homes is their unique glass fronts, which replace entire walls and allow unrestricted views of the outside, not only from every bedroom, but from every living area. The modules can be arranged differently to create individual house designs, which can be further differentiated by being painted with a choice of five facade colours.



Good for both the climate and your bank account

Stylish and durable

The interiors and bathrooms have been designed by our team of interior designers according to the latest living trends. There are four attractive designs to choose from, so there is sure to be something to suit your taste. The walls and flooring throughout are made of durable material and perfectly colour-coordinated.

Perfectly compact

The shower rooms may be small, but they still offer all the comfort and functionality you would expect in a modern shower room. High-quality fittings, shower cubicles with real glass doors and various wash basins in different designs – also with practical base cabinets – are available to choose from. If you wish, you can order the kitchen, including appliances, directly from us, so that your holiday home is fully ready to move into when you arrive.

If you would like to use your holiday home all year round, this is possible with the 'NEXT Holiday Pro' version in accordance with the GEG (Building Energy Act). Please speak to your Danwood agent about this.



Maximum prefabrication

Almost everything installed in the factory

Our high quality NEXT modular homes, like all other Danwood homes, are prefabricated in the factory and then delivered to the construction site by truck. The difference with NEXT-Holiday is that the level of prefabrication is significantly higher. It's not only windows and front doors which are pre-installed in the factory, but also complete bathrooms and move-in-ready rooms. The walls of our holiday homes are covered with panels decorated with a wood-textured coating as standard. The flooring consists of vinyl panels with the appearance of wood or concrete. In the bathroom, both the walls and the floor are covered with stylish Rocko tiles, a stone and plastic mixture consisting of over 70% natural marble and absolutely water-resistant. The house is equipped with infrared heating and a heat pump for hot water, as well as modern sanitaryware. A kitchen, including appliances, can be ordered as an optional extra.



Time saving concepts

Regardless of adverse circumstances

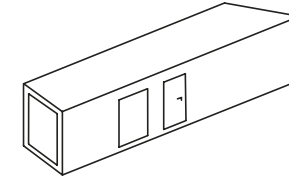
The design and interior fittings that have already been prepared in the factory save both you, and us, time. In the factory, highly qualified craftsmen build your holiday home until it is almost 100% finished. Because there are no disruptions or delays caused by, for instance, bad weather, work can continue at all times, with full focus on the quality of the work while keeping to the schedule. Then on the construction site, a small Danwood construction team assembles the modules and completes the final finishing to make the seams invisible. You simply have to order the foundations in advance.



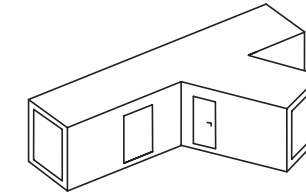
Exactly your size

We offer our NEXT Holiday homes in different sizes. There are six models with narrower modules in size S (module width 2.85m). These provide living spaces of approximately 23sqm to 45sqm, and can have up to three bedrooms, depending on size and requirements. There are four wider variants with modules in size L (module width 3.85m), which are also available with two to three bedrooms and living spaces of approximately 32sqm to 64sqm.

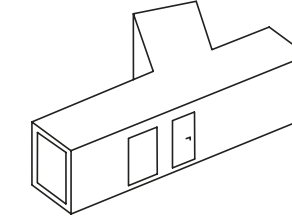
NEXT Holiday S



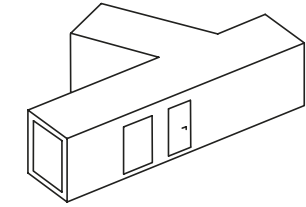
NEXT Holiday 23 S-1 17



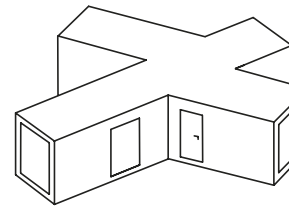
NEXT Holiday 34 S-2 27



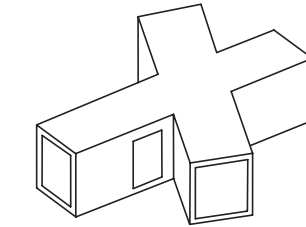
NEXT Holiday 35 S-2 37



NEXT Holiday 36 S-2 47

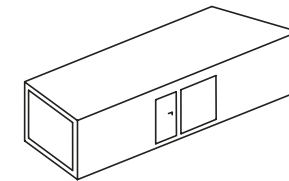


NEXT Holiday 45 S-3 57

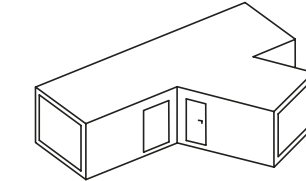


NEXT Holiday 46 S-3 67

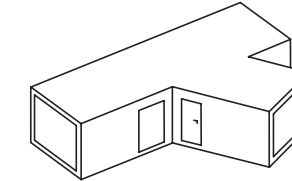
NEXT Holiday L



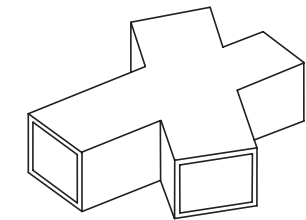
NEXT Holiday 32 L-1 79



NEXT Holiday 48 L-3 89



NEXT Holiday 49 L-2 99



NEXT Holiday 63 L-3 109

NEXT Holiday S

Mini dream homes with maximum potential

NEXT Holiday homes are available in different module widths. NEXT Holiday S is built from S size modules with a width of 2.85m. The six Holiday S models offer living spaces ranging from 23sqm to 45sqm and up to three bedrooms. These comfortable holiday homes with easy-care interiors guarantee you a relaxing break!





Next Holiday 23 S-1

A mini house with lots to enjoy

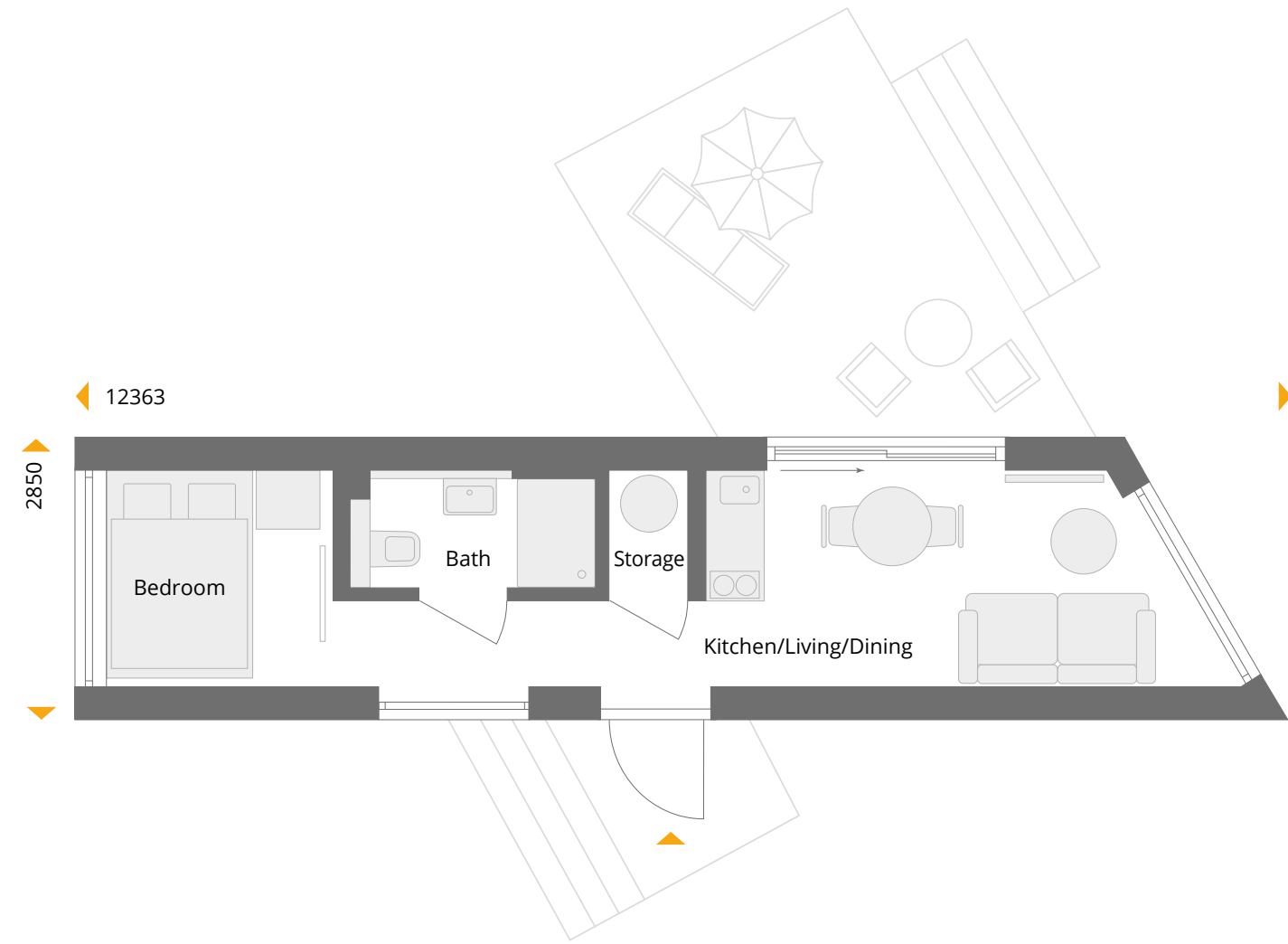
Wake up early in the morning with the birds, walk barefoot through the dew and watch the first rays of the sunrise. After a swim in the lake, enjoy your first coffee of the day. Cuddle up in bed again until breakfast beckons on the sunny terrace. Like the sound of this? Our one- bedroom mini holiday home provides your perfect base. Small enough that it hardly needs any work, big enough for relaxed downtime. The kitchenette has the most important things at hand, the comfortable shower room lacks nothing, and three glass panoramic walls offer wonderful views.

#Vacation Home #Weekend Home #Turnkey #HouseToGo

The walls of the NEXT Holiday homes are covered with panels decorated with a wood-textured coat-ing as standard. The flooring consists of vinyl panels with the appearance of wood or concrete. The walls and the flooring in the bathroom are covered with stylish Rocko elements, a stone-plastic combi-nation that consists of over 70% natural marble and is completely water-resistant. The house is equipped with infrared heating and a heat pump for hot water, as well as modern sanitaryware. A kitchen, including appliances, can be ordered as an optional extra.



NEXT HOLIDAY 23 S-1	22,68 m²
Bedroom	5,11 m ²
Bath	3,01 m ²
Storage	0,95 m ²
Kitchen/Living/Dining	13,61 m ²









Next Holiday 34 S-2

Add more modules

If the plot allows for a slightly wider house – in this case a good 7m – an additional narrow S-module can make your holiday home even more comfortable. Another smaller bedroom and an inviting entrance area are gained by adding a side wing, of an extra 11sqm of living space, compared to the NEXT Holiday 23 S-1. Panoramic glass walls create the feeling of sitting in the middle of the great outdoors!

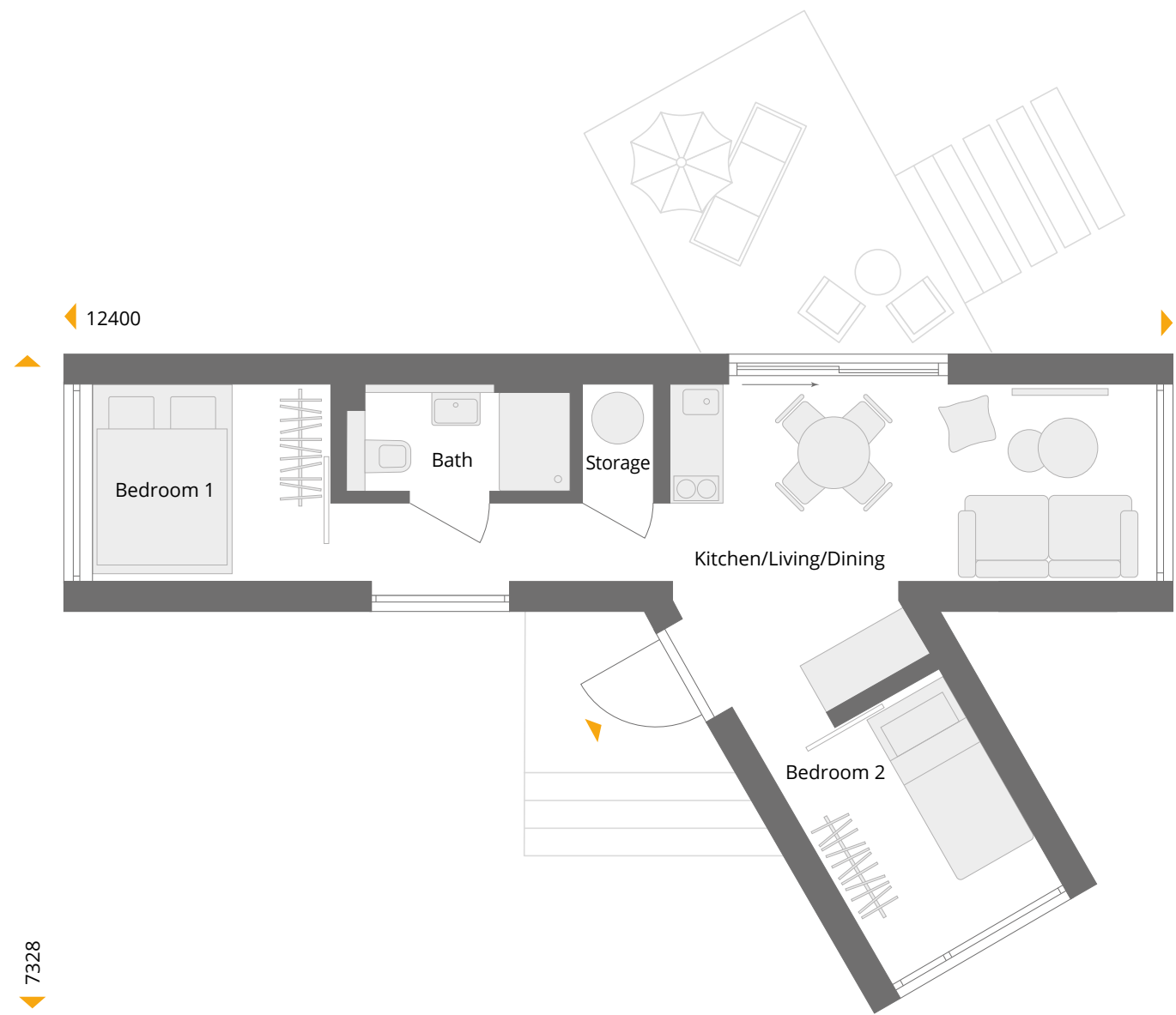
#Vacation Home #Weekend Home #Turnkey #HouseToGo

The walls of the NEXT Holiday homes are covered with panels decorated with a wood-textured coat-ing as standard. The flooring consists of vinyl panels with the appearance of wood or concrete. The walls and the flooring in the bathroom are covered with stylish Rocko elements, a stone-plastic combi-nation that consists of over 70% natural marble and is completely water-resistant. The house is equipped with infrared heating and a heat pump for hot water, as well as modern sanitaryware. A kitchen, including appliances, can be ordered as an optional extra.





NEXT HOLIDAY 34 S-2	33,99 m²
Bedroom 1	5,88 m ²
Bath	3,01 m ²
Storage	0,95 m ²
Kitchen/Living/Dining	18,27 m ²
Bedroom 2	5,88 m ²









Next Holiday 35 S-2

Got a bigger group?

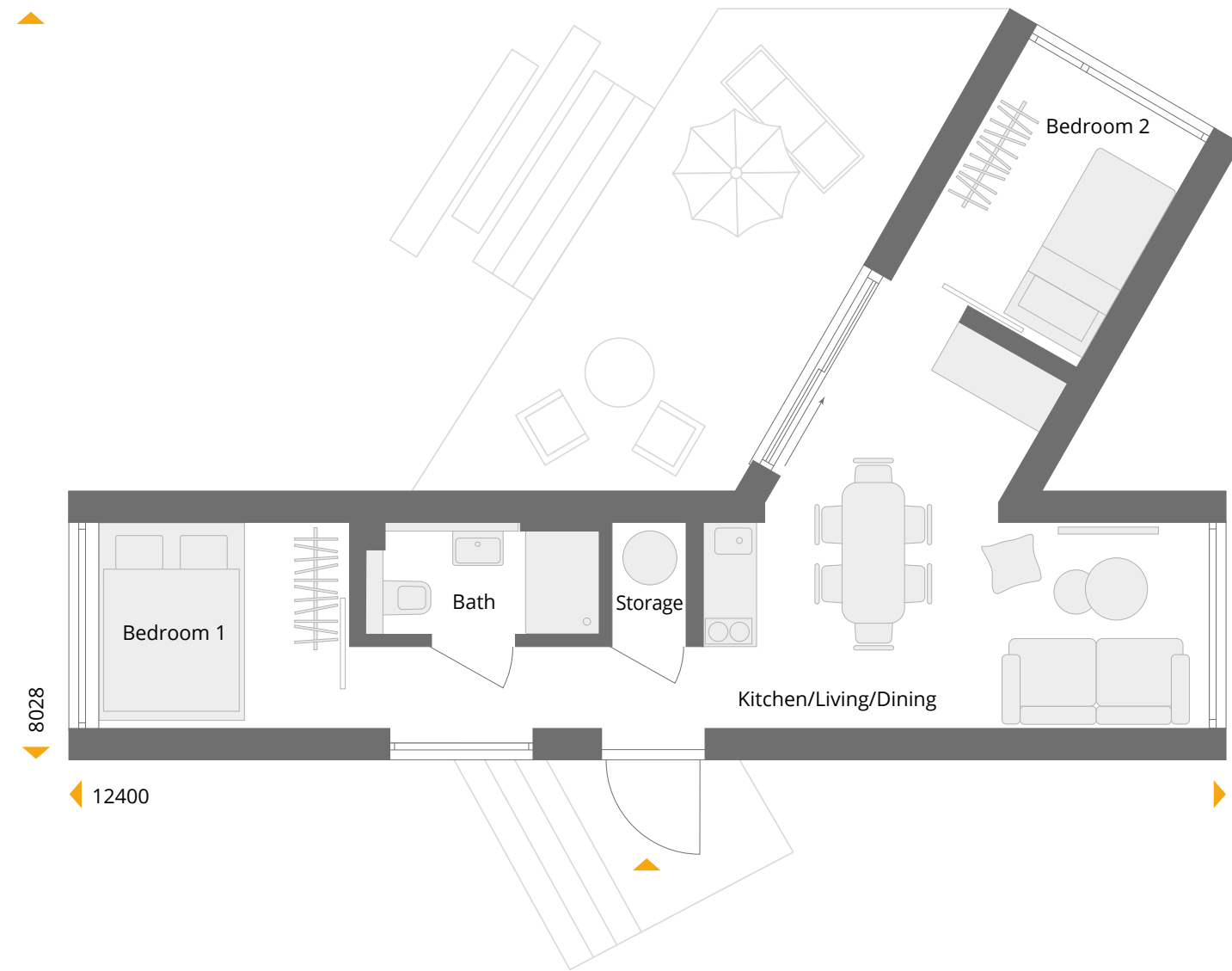
The beauty of modular houses is that if you need extra rooms you can add them, especially if it's a second bedroom and an additional large wardrobe, because for four people – or even a maximum of six – you need a bit more living and storage space. And despite the narrow S modules, there is still space for a large table where you can eat and play together. The addition of the side wing also provides a wind-protected terrace space, a permanent fixture and just like having a sunroom.

#Vacation Home #Weekend Home #Turnkey #HouseToGo

The walls of the NEXT Holiday homes are covered with panels decorated with a wood-textured coat-ing as standard. The flooring consists of vinyl panels with the appearance of wood or concrete. The walls and the flooring in the bathroom are covered with stylish Rocko elements, a stone-plastic combi-nation that consists of over 70% natural marble and is completely water-resistant. The house is equipped with infrared heating and a heat pump for hot water, as well as modern sanitaryware. A kitchen, including appliances, can be ordered as an optional extra.



NEXT HOLIDAY 35 S-2	35,77 m²
Bedroom 1	5,88 m ²
Bath	3,01 m ²
Storage	0,95 m ²
Kitchen/Living/Dining	20,05 m ²
Bedroom 2	5,88 m ²









Next Holiday 36 S-2

Narrowly spacious

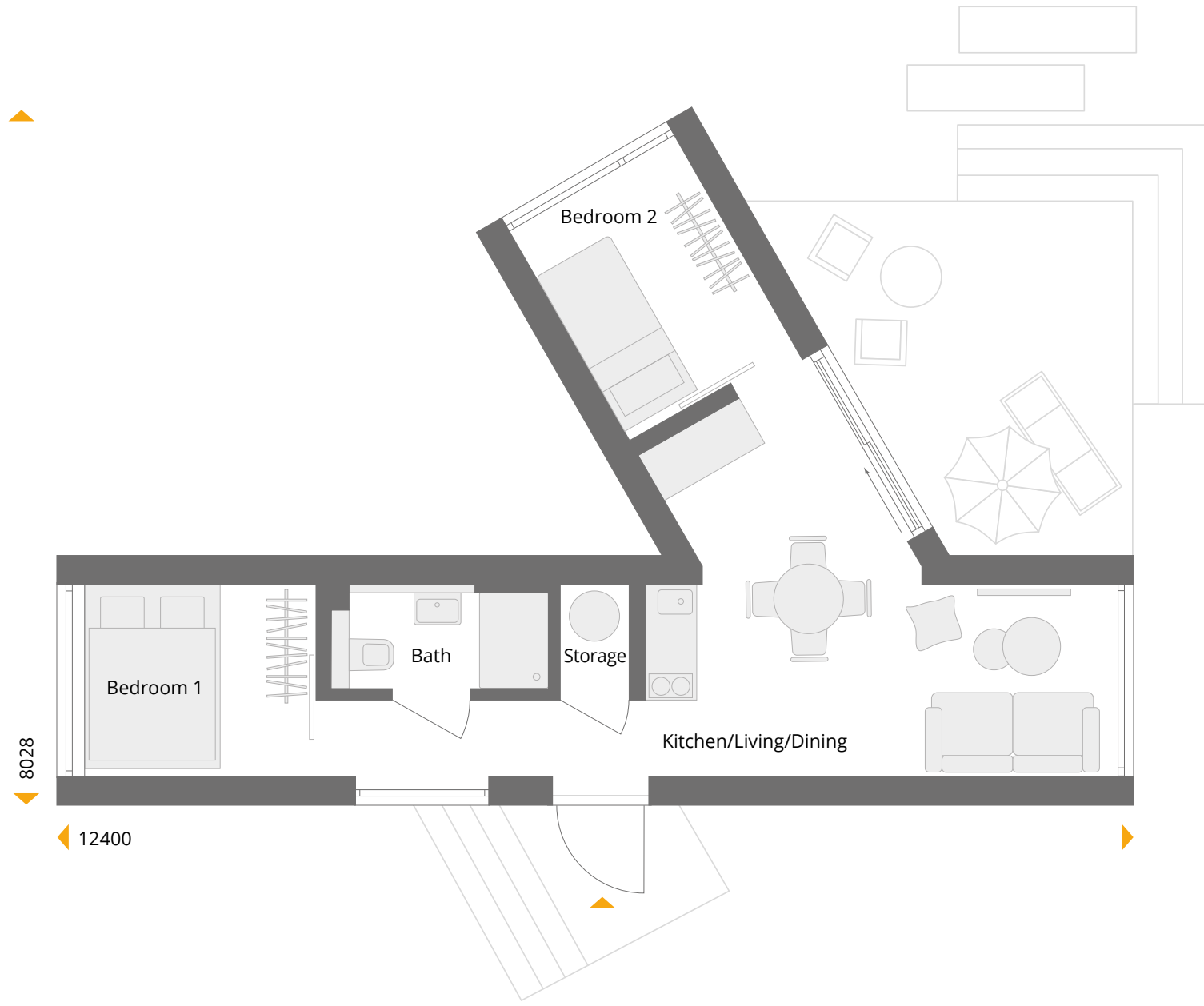
This elegant NEXT Holiday home with its natural-coloured slatted cladding is almost 36sqm. It's constructed using narrow S-modules but there is still space for a second bedroom thanks to the additional docked wing which also increases space for family gatherings in the living area between the two modules. The large, glazed windows offer wonderful views in all four directions, while a sheltered terrace provides additional outdoor living space..

#Vacation Home #Weekend Home #Turnkey #HouseToGo

The walls of the NEXT Holiday homes are covered with panels decorated with a wood-textured coat-ing as standard. The flooring consists of vinyl panels with the appearance of wood or concrete. The walls and the flooring in the bathroom are covered with stylish Rocko elements, a stone-plastic combi-nation that consists of over 70% natural marble and is completely water-resistant. The house is equipped with infrared heating and a heat pump for hot water, as well as modern sanitaryware. A kitchen, including appliances, can be ordered as an optional extra.



NEXT HOLIDAY 36 S-2	35,78 m²
Bedroom 1	5,88 m ²
Bath	3,01 m ²
Storage	0,95 m ²
Kitchen/Living/Dining	20,06 m ²
Bedroom 2	5,88 m ²









Next Holiday 45 S-3

UFO landed?

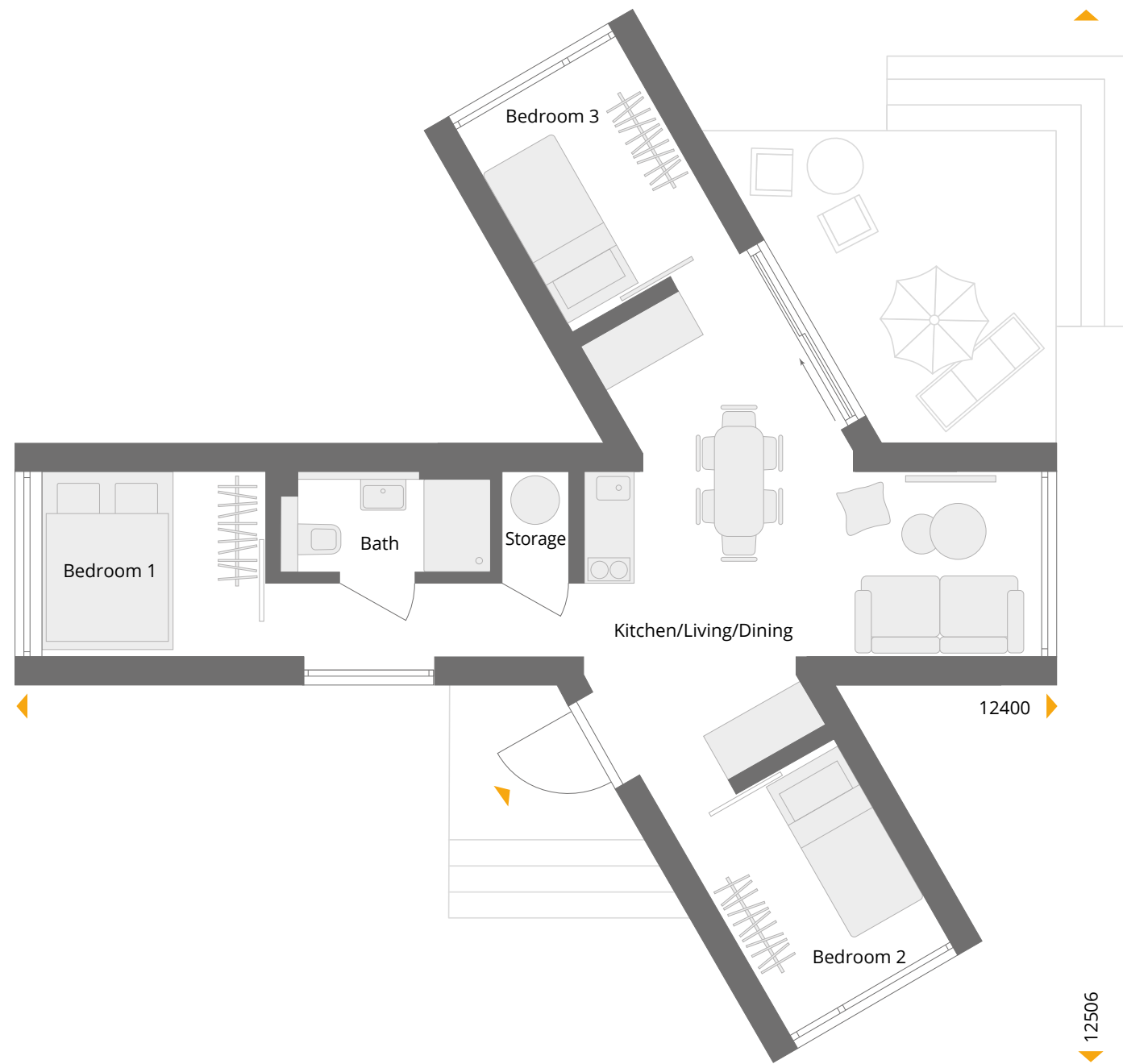
This version is made up of S-modules with two side wings and looks a bit like a UFO! But three bedrooms offer sufficient earthly comfort for a larger family of six, as two guests could sleep on the sofa bed. Each bedroom has a fully glazed wall, making the home appear more spacious and bringing nature closer. This 45sqm house also has space for a mini kitchen, a shower room and a technical room. Everyone can gather at the dining table at the centre of the house where a large sliding door leads to the terrace.

#Vacation Home #Weekend Home #Turnkey #HouseToGo

The walls of the NEXT Holiday homes are covered with panels decorated with a wood-textured coat-ing as standard. The flooring consists of vinyl panels with the appearance of wood or concrete. The walls and the flooring in the bathroom are covered with stylish Rocko elements, a stone-plastic combi-nation that consists of over 70% natural marble and is completely water-resistant. The house is equipped with infrared heating and a heat pump for hot water, as well as modern sanitaryware. A kitchen, including appliances, can be ordered as an optional extra.



NEXT HOLIDAY 45 S-3	45,08 m²
Bedroom 1	5,88 m ²
Bath	3,01 m ²
Storage	0,95 m ²
Kitchen/Living/Dining	23,48 m ²
Bedroom 2	5,88 m ²
Bedroom 3	5,88 m ²









Next Holiday 46 S-3

Flexible options

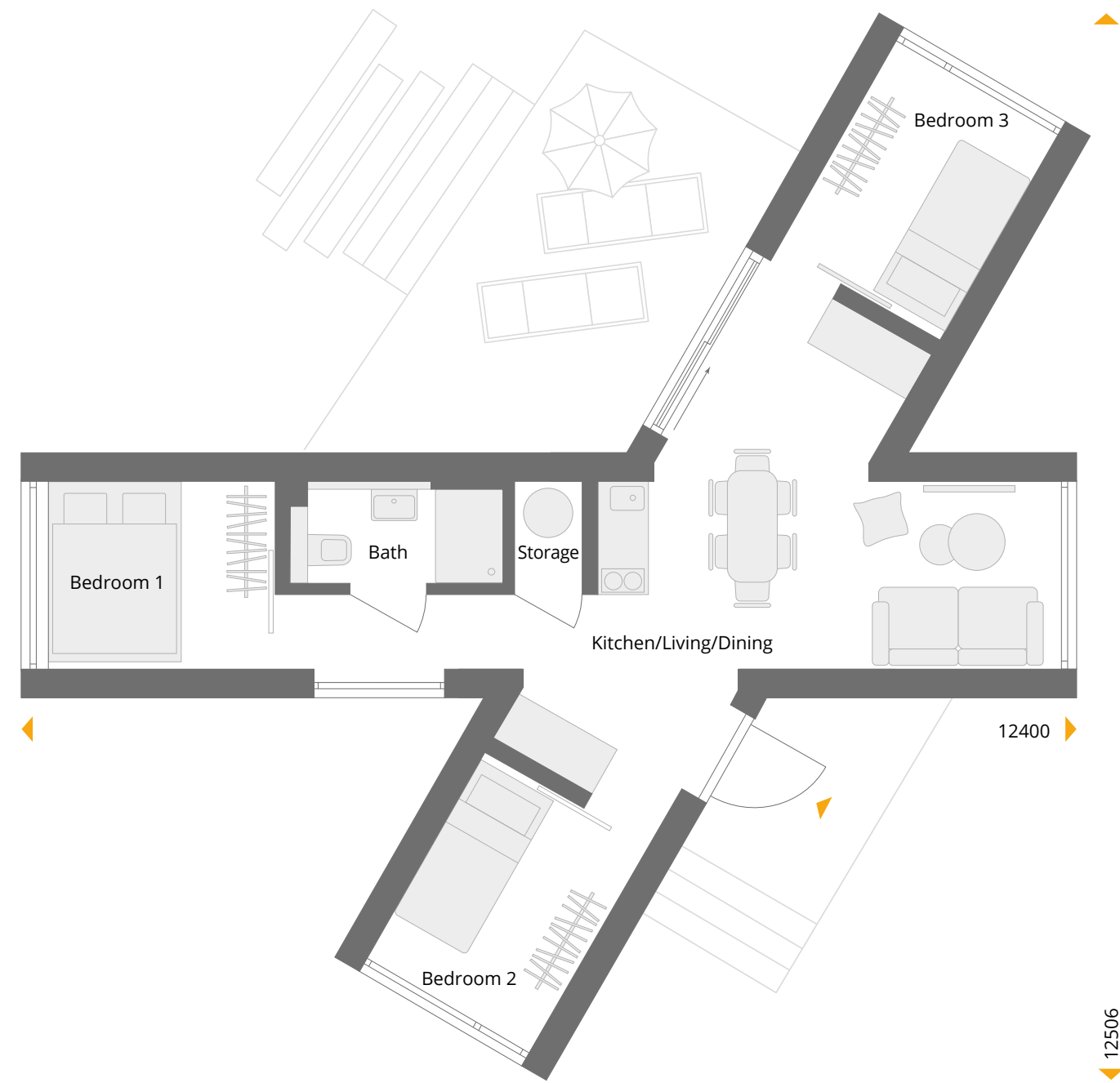
Like the previous version, this S-module house also offers two side wings, each with a bedroom so, for four people, the space is very generous. If you have more people, you can set up bunk beds and there is also more space for a wardrobe or storage space making the living areas more comfortable for a larger family. The terrace provides extra outdoor space but even if it rains everyone can retreat to their own private sanctuary or meet together at the large table.

#Vacation Home #Weekend Home #Turnkey #HouseToGo

The walls of the NEXT Holiday homes are covered with panels decorated with a wood-textured coat-ing as standard. The flooring consists of vinyl panels with the appearance of wood or concrete. The walls and the flooring in the bathroom are covered with stylish Rocko elements, a stone-plastic combi-nation that consists of over 70% natural marble and is completely water-resistant. The house is equipped with infrared heating and a heat pump for hot water, as well as modern sanitaryware. A kitchen, including appliances, can be ordered as an optional extra.



NEXT HOLIDAY 46 S-3	45,08 m²
Bedroom 1	5,88 m ²
Bath	3,01 m ²
Storage	0,95 m ²
Kitchen/Living/Dining	23,48 m ²
Bedroom 2	5,88 m ²
Bedroom 3	5,88 m ²







NEXT Holiday L

The ideal home from home

NEXT Holiday homes are available in two different module widths. There are four L-sized modules that are 3.85m wide and available with 32sqm up to 64sqm of living space, and with two or three bedrooms. So you can enjoy your precious free time in a more spacious holiday home, with all the modern comforts you're used to.





Next Holiday 32 L-1

Need a bit more space?

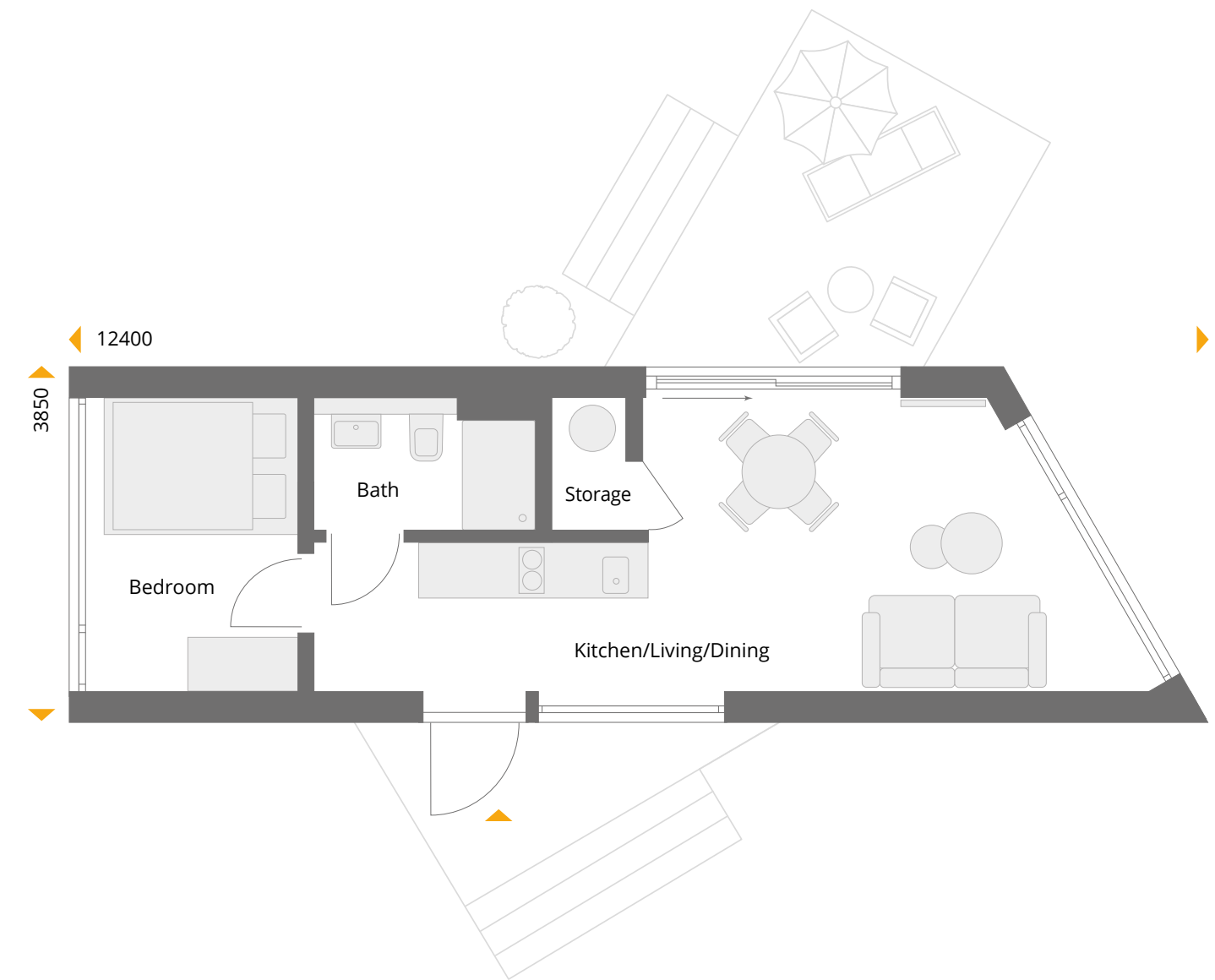
If you'd like a one-bedroom modular holiday home with a bit more space, we have the larger NEXT Holiday 32 L-1. This L version is an extra one metre in width, bringing a total of 9sqm more living space. This is most noticeable in the bedroom and the living/dining area, where two additional guests could sleep on the sofa bed and easily find space at the dining table. The kitchenette and the panoramic windows are also larger in the L version, so this minimalist holiday home is definitely suitable for weekend family breaks.

#Vacation Home #Weekend Home #Turnkey #HouseToGo

The walls of the NEXT Holiday homes are covered with panels decorated with a wood-textured coat-ing as standard. The flooring consists of vinyl panels with the appearance of wood or concrete. The walls and the flooring in the bathroom are covered with stylish Rocko elements, a stone-plastic combi-nation that consists of over 70% natural marble and is completely water-resistant. The house is equipped with infrared heating and a heat pump for hot water, as well as modern sanitaryware. A kitchen, including appliances, can be ordered as an optional extra.



NEXT HOLIDAY 32 L-1	32,12 m²
Bedroom	7,00 m ²
Bath	3,34 m ²
Storage	1,17 m ²
Kitchen/Living/Dining	20,61 m ²









Next Holiday 48 L-3

Comfort and functionality

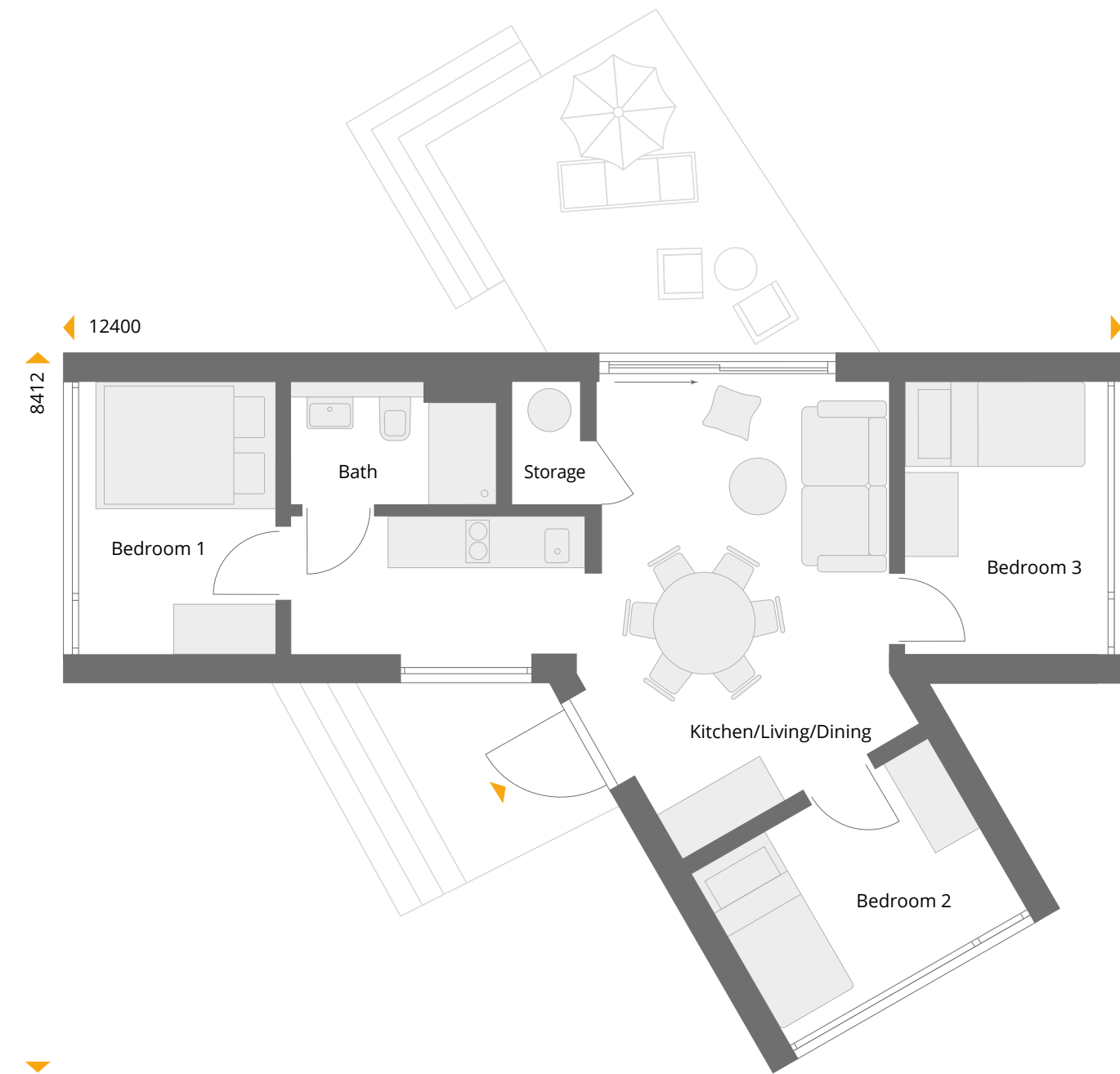
You don't have to have a personal jetty from your house to the lake to enjoy this spacious holiday home! But even without your own personal waterfront, this temporary home with larger modules has lots of other benefits. The L-modules and an attached side wing create plenty space for a living, dining and cooking area with access to a terrace. There are three good-sized bedrooms with almost 4m-wide glass fronts, so you can lie in bed and enjoy nature in total comfort!

#Vacation Home #Weekend Home #Turnkey #HouseToGo

The walls of the NEXT Holiday homes are covered with panels decorated with a wood-textured coat-ing as standard. The flooring consists of vinyl panels with the appearance of wood or concrete. The walls and the flooring in the bathroom are covered with stylish Rocko elements, a stone-plastic combi-nation that consists of over 70% natural marble and is completely water-resistant. The house is equipped with infrared heating and a heat pump for hot water, as well as modern sanitaryware. A kitchen, including appliances, can be ordered as an optional extra.



NEXT HOLIDAY 32 L-1	48,27 m²
Bedroom 1	7,00 m ²
Bath	3,34 m ²
Storage	1,17 m ²
Kitchen/Living/Dining	20,78 m ²
Bedroom 2	7,00 m ²
Bedroom 3	6,98 m ²









Next Holiday 49 L-2

Just like home

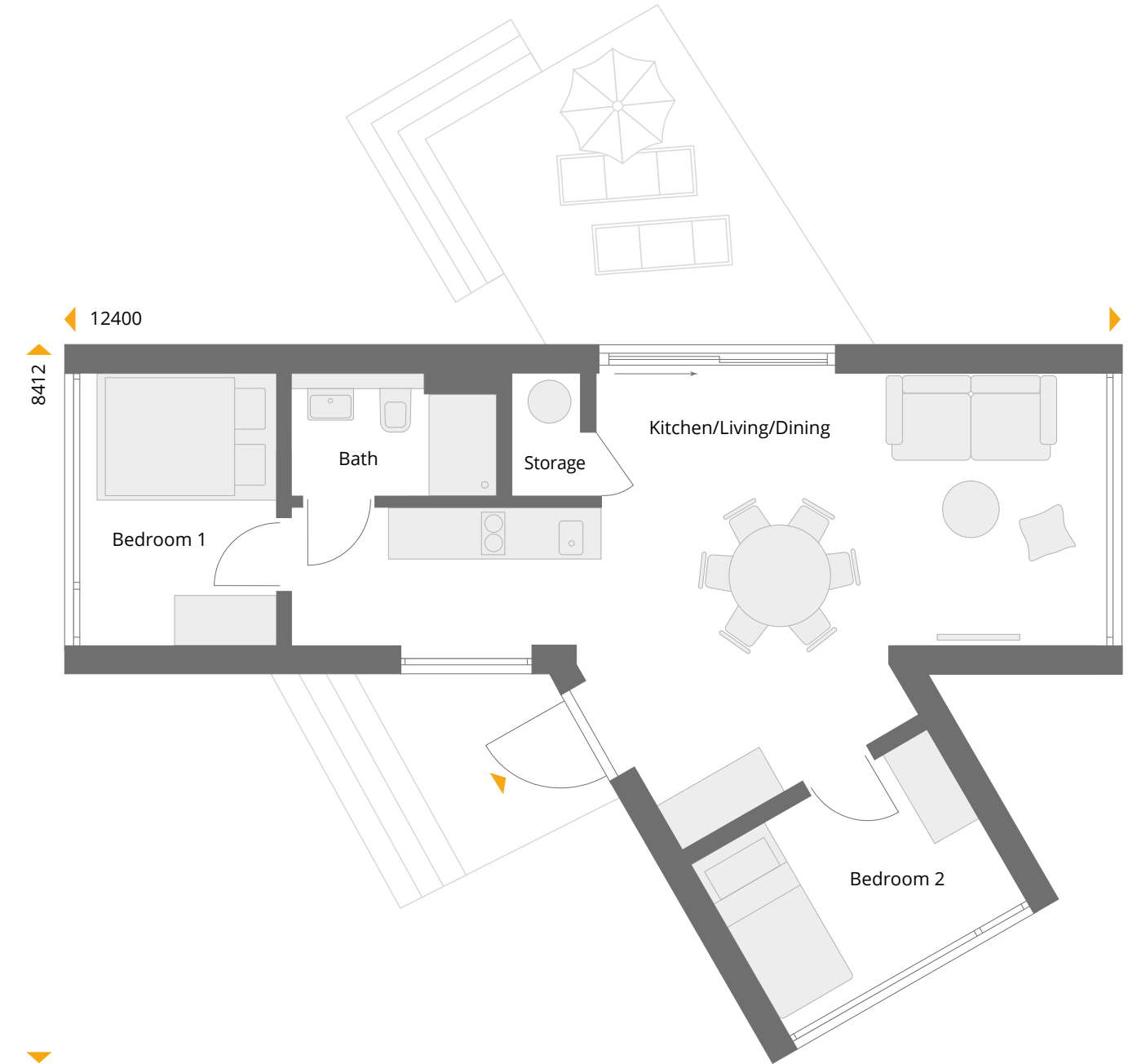
If you're a small family who still likes to enjoy the greatest possible space and living comfort in your holiday home, we recommend this 49sqm retreat. A total of 30sqm invites you to take a long, relaxing break. The two bedrooms have panoramic views and even the kitchen is set up for longer stays. This design, which is made of wider L-modules provides plenty space in the living/dining area and is sure to remind you of home.

#Vacation Home #Weekend Home #Turnkey #HouseToGo

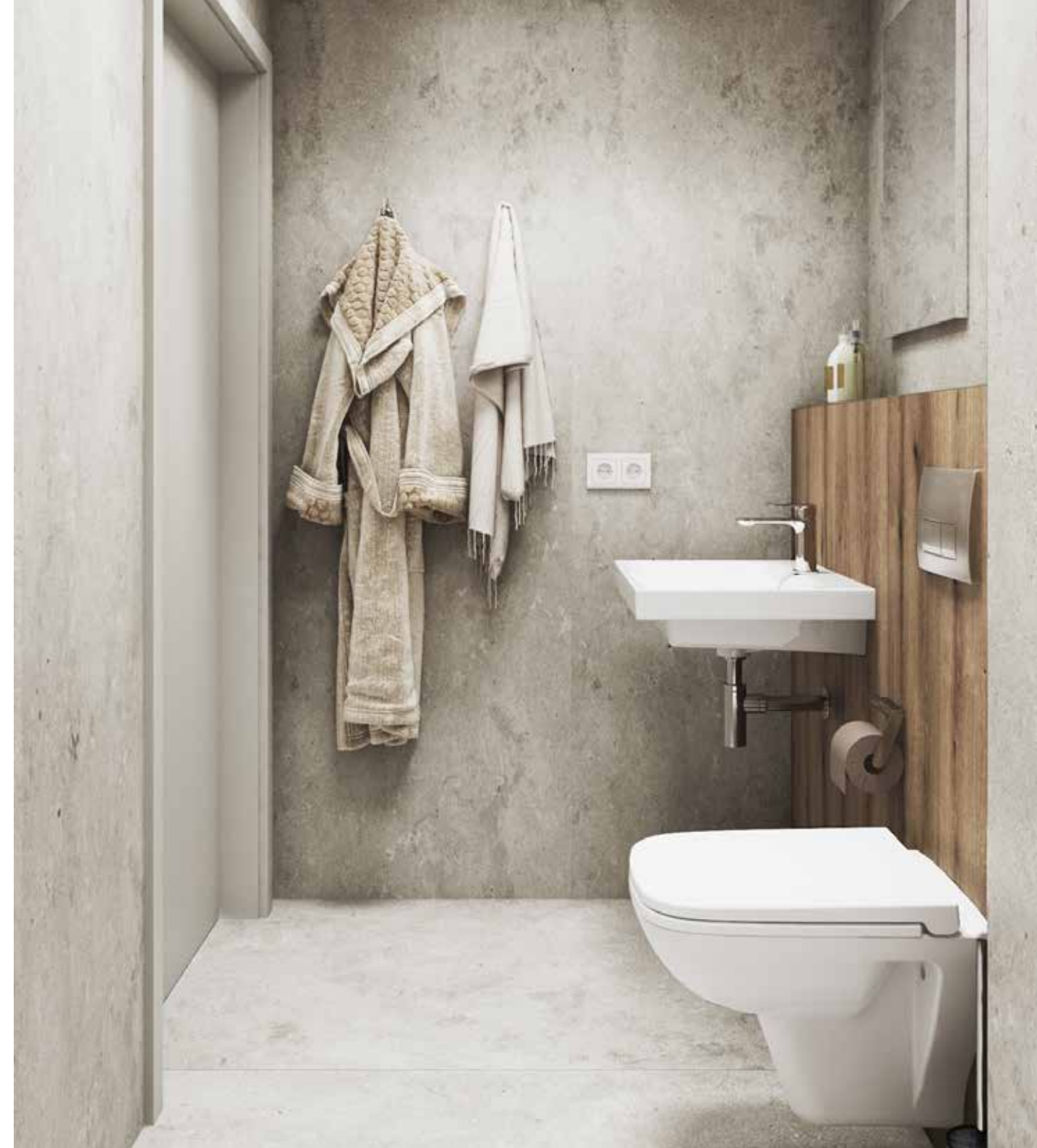
The walls of the NEXT Holiday homes are covered with panels decorated with a wood-textured coat-ing as standard. The flooring consists of vinyl panels with the appearance of wood or concrete. The walls and the flooring in the bathroom are covered with stylish Rocko elements, a stone-plastic combi-nation that consists of over 70% natural marble and is completely water-resistant. The house is equipped with infrared heating and a heat pump for hot water, as well as modern sanitaryware. A kitchen, including appliances, can be ordered as an optional extra.



NEXT HOLIDAY 49 L-2	48,87 m²
Bedroom 1	7,00 m ²
Bath	3,34 m ²
Storage	1,17 m ²
Kitchen/Living/Dining	30,36 m ²
Bedroom 2	7,00 m ²









Next Holiday 63 L-3

Holiday with friends

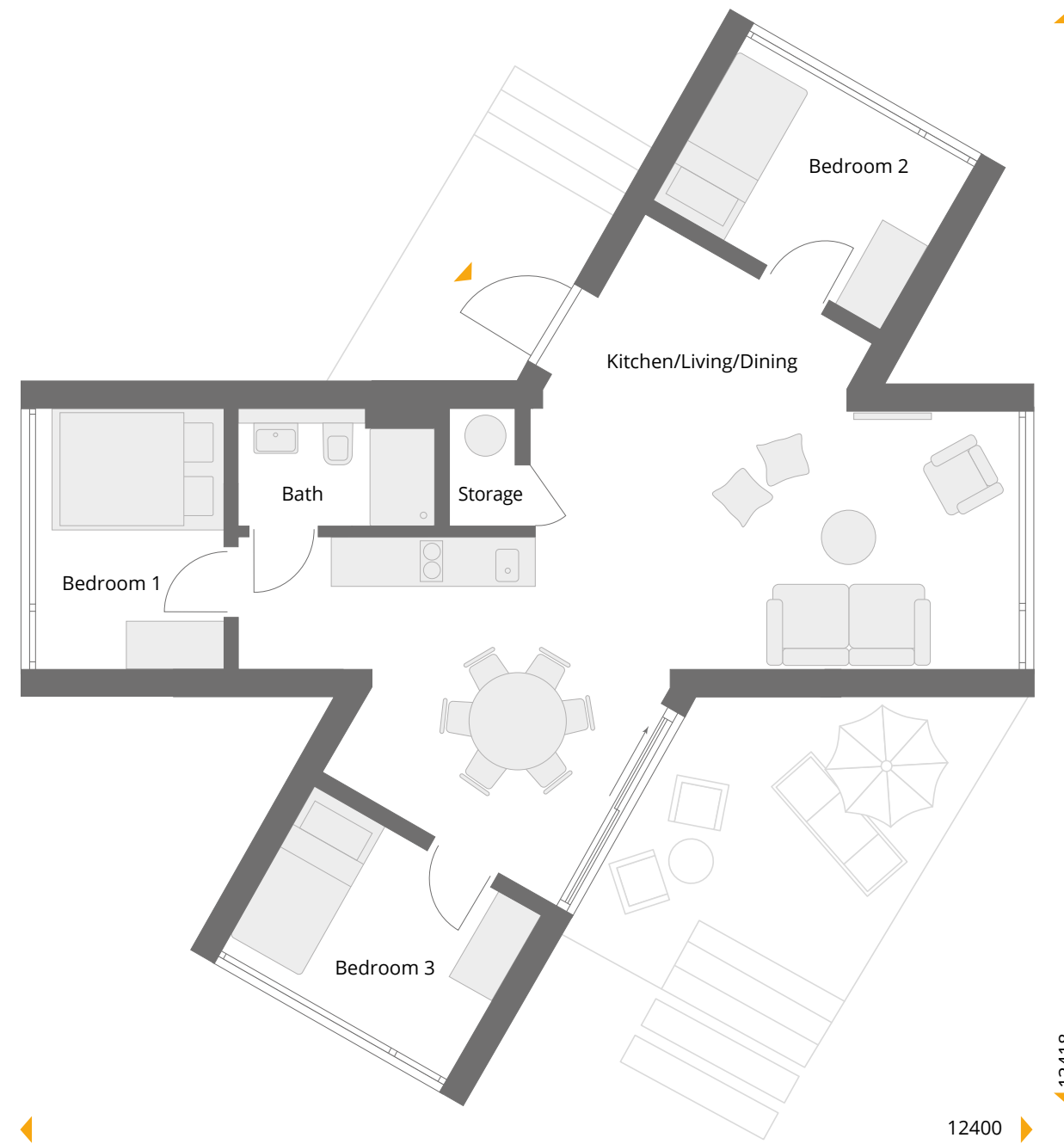
At 63sqm, this holiday home is our largest NEXT Holiday home. Built from L-modules and with two side wings, it offers three bedrooms and a spacious and light-flooded common area with a lounge and separate dining area. The kitchenette provides everything you need for self-sufficiency, and the modern bathroom is truly luxurious. Five fully glazed panoramic walls bring the surrounding nature directly into the house and, together with the wind-protected terrace, create a fantastic holiday home.

#Vacation Home #Weekend Home #Turnkey #HouseToGo

The walls of the NEXT Holiday homes are covered with panels decorated with a wood-textured coat-ing as standard. The flooring consists of vinyl panels with the appearance of wood or concrete. The walls and the flooring in the bathroom are covered with stylish Rocko elements, a stone-plastic combi-nation that consists of over 70% natural marble and is completely water-resistant. The house is equipped with infrared heating and a heat pump for hot water, as well as modern sanitaryware. A kitchen, including appliances, can be ordered as an optional extra.



NEXT HOLIDAY 63 L-3	63,42 m²
Bedroom 1	7,00 m ²
Bath	3,34 m ²
Storage	1,17 m ²
Kitchen/Living/Dining	37,91 m ²
Bedroom 2	7,00 m ²
Bedroom 3	7,00 m ²









Our company

Danwood is one of the leading manufacturers of turnkey timber-framed prefabricated houses in Europe. Beautiful architecture, well-thought-out, practical floor plans and transparent prices, combined with the highest quality of materials and craftsmanship have been delighting our customers for almost 30 years. The heart of our company is the production facility, which is located in the

Podlaskie region of eastern Poland. This region is famous for its enchanting nature and the centuries- old tradition of wooden construction. From here, we deliver over 30 houses every week to construction sites across Europe, where our professional in-house construction crews make our customers' dreams come true. Danwood has been in the house-building business since 1995, currently employs over 2,300 people and has built more than 17,000 homes during that time.

In addition to the successful brands DAN-WOOD House, DAN-WOOD Family and VISION by Danwood, NEXT by Danwood is the youngest brand from Danwood S.A.



N E X T
by Danwood



Danwood S.A.

Justus-von-Liebig-Str. 7

12489 Berlin

sales@dan-wood.eu

Edition May 2024

